



Werever Cabinet Specification Sheets

Table Of Contents

2. Base Cabinet with Full Height Door
3. Base Cabinet with Top Drawer
4. Sink Base Cabinet with False Face
5. Sink Base Cabinet with Full Height Door
6. ADA Sink Base Cabinet
7. ADA Sink Base with Full Height Door
8. Pullout Trash Cabinet with Full Height Door
9. Pullout Trash Cabinet with Top Drawer
10. Double Pull-Out Trash Cabinet with Full Height Door
11. Double Pull-Out Trash Cabinet with Top Drawer
12. Pullout LP Tank Cabinet
13. Pull-Out LP Tank Cabinet with Top Drawer
14. 3-Drawer Base Cabinet
15. 4-Drawer Base Cabinet
16. 5-Drawer Base Cabinet
17. Open Base Cabinet
18. Grill Cabinet
19. Side Burner Cabinet
20. Side Burner Cabinet with Drawers
21. Grill Pedestal Cabinet with Door
22. Grill Pedestal Cabinet with Drawers
23. Built-In Appliance Pedestal Cabinet
24. Blind Base Corner Cabinet
25. Blind Base Double-Door Cabinet
26. Diagonal Corner Cabinet
27. Bi-Level Cabinets (Bar Cabinets)
28. Wall Cabinet
29. Open Shelf Wall Cabinet
30. Microwave Wall Cabinet
31. Blind Corner Wall Cabinet
32. Wall Diagonal Corner Cabinet
33. Pantry Cabinet
34. Pantry Cabinet with Drawers
35. Corbels
36. False Cabinet
37. Diagonal Corner Clip
38. Fillers
39. Refrigerator End Panel
40. Corner Posts
41. Bi-Level Corner Posts
42. Bi-Level Assemblies
43. Decorative Back Panels
44. Access Doors
45. Toe Kick
46. Specification Cheat Sheet

Specification Sheet

Base Cabinet with Full Height Door

Available Models:

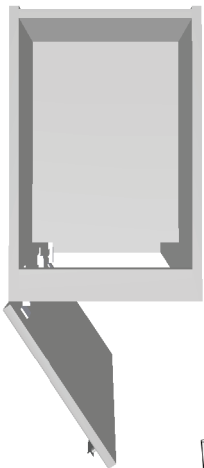
B-9	1 Door	R/L
B-12	1 Door	R/L
B-15	1 Door	R/L
B-18	1 Door	R/L
B-21	2 Door	
B-24	2 Door	
B-27	2 Door	
B-30	2 Door	
B-33	2 Door	
B-36	2 Door	



Any width available from 9 Inch to 36 Inch, and in any fraction of an inch.

Base Cabinets with Full Height Door are designed standard with two adjustable shelves and have either one or two doors depending upon width. Additional shelves and even pullout trays (up to 30" wide) can be added for specialty storage and added functionality to meet your needs.

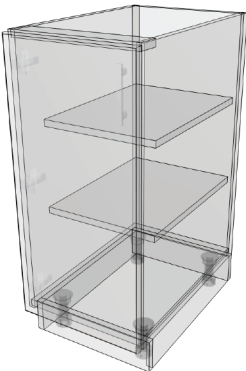
TOP View



FRONT View



3D View



Standard Height: 34.75" overall (31" box)
Standard Depth: 24" overall (23" box)

Available Modifications:

Extend Side Panel (L/R)	+12"
Increase Height	+6"
Decrease Height	-6"
Decrease Width	-3"
Increase Depth	+12"
Decrease Depth	-12"
Add Shelf (up to 36"W)	+1
Add Pull-Out Tray (up to 30"W)	+3

Visit werever.com to view available colors and door styles for all cabinets.

All Werever Outdoor Cabinets are constructed from solid, 3/4" high-density polyethylene

Specification Sheet

Base Cabinet with Top Drawer

Available Models:

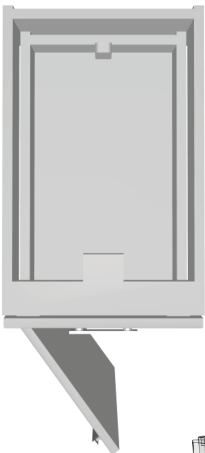
- B-9-D 1 Door R/L
- B-12-D 1 Door R/L
- B-15-D 1 Door R/L
- B-18-D 1 Door R/L
- B-21-D 2 Door
- B-24-D 2 Door
- B-27-D 2 Door
- B-30-D 2 Door



Any width available from 9 Inch to 30 Inch, and in any fraction of an inch.

A Base Cabinet with Top Drawer is the most common style cabinet in any kitchen. The top drawer provides great storage for grilling tools, utensils, foil, mitts and other accessories, while an adjustable behind the doors provides storage space for larger items. Add pullout trays for ease of access to items stored below or remove the adjustable shelf to storage larger or taller items.

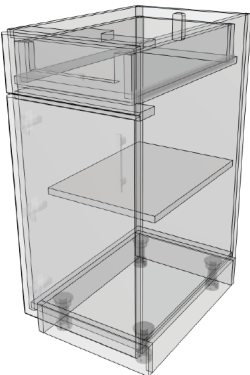
TOP View



FRONT View



3D View



Standard Height: 34.75" overall (31" box)
Standard Depth: 24" overall (23" box)

Available Modifications:

- | | |
|--------------------------------|------|
| Extend Side Panel (L/R) | +12" |
| Increase Height | +6" |
| Decrease Height | -6" |
| Decrease Width | -3" |
| Increase Depth | +12" |
| Decrease Depth | -12" |
| Add Shelf (up to 30"W) | +1 |
| Add Pull-Out Tray (up to 30"W) | +3 |

Visit werenever.com to view available colors and door styles for all cabinets.

All Werever Outdoor Cabinets are constructed from solid, 3/4" high-density polyethylene

Specification Sheet

Sink Base Cabinet with False Face

Available Models:

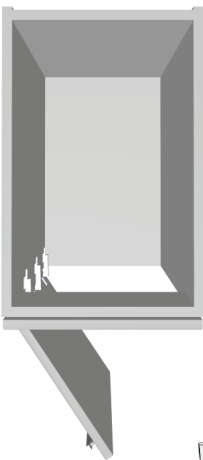
SB-9	1 Door	R/L	SB-36	2 Door
SB-12	1 Door	R/L	SB-39	2 Door
SB-15	1 Door	R/L	SB-42	4 Door
SB-18	1 Door	R/L	SB-45	4 Door
SB-21	2 Door		SB-48	4 Door
SB-24	2 Door		SB-51	4 Door
SB-27	2 Door		SB-54	4 Door
SB-30	2 Door		SB-57	4 Door
SB-33	2 Door		SB-60	4 Door



Any width available from 9 Inch to 60 Inch, and in any fraction of an inch.

Sink Base Cabinets are used to accommodate most any drop-in or undermount sink (for Apron-front or Farmhouse style sinks, see Grill Cabinets), and may also be used below drop-in coolers, drop-in side burners, cooktops, and other drop-in style appliances without face controls. Larger sink bases can also be used to store oversized items including chair cushions and pool noodles.

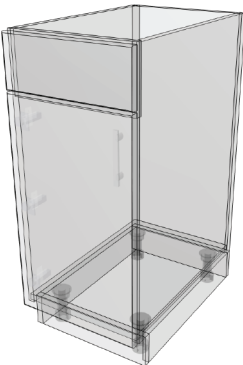
TOP View



FRONT View



3D View



Standard Height: 34.75" overall (31" box)
Standard Depth: 24" overall (23" box)

Available Modifications:

Extend Side Panel (L/R)	+12"
Increase Height	+6"
Decrease Height	-6"
Decrease Width	-3"
Increase Depth	+12"
Decrease Depth	-18"

Add Shelf (up to 36"W)	+2
Add Pull-Out Tray (up to 30"W)	+2

NOTE: Shelves and Pullout Trays in Sink Cabinets may interfere with utilities below the sink or other appliance. Consult with your Account Manager for inclusion of these items in your specific design.

Visit werenever.com to view available colors and door styles for all cabinets.

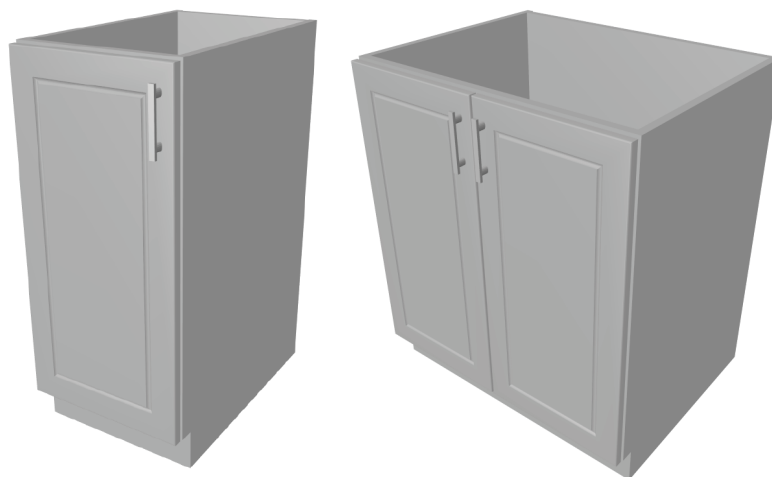
All Werever Outdoor Cabinets are constructed from solid, 3/4" high-density polyethylene

Specification Sheet

Sink Base Cabinet with Full Height Door

Available Models:

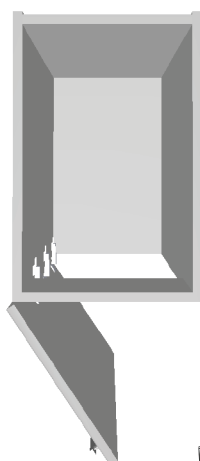
SBFH-9	1 Door	R/L	SBFH-36	2 Door
SBFH-12	1 Door	R/L	SBFH-39	2 Door
SBFH-15	1 Door	R/L	SBFH-42	4 Door
SBFH-18	1 Door	R/L	SBFH-45	4 Door
SBFH-21	2 Door		SBFH-48	4 Door
SBFH-24	2 Door		SBFH-51	4 Door
SBFH-27	2 Door		SBFH-54	4 Door
SBFH-30	2 Door		SBFH-57	4 Door
SBFH-33	2 Door		SBFH-60	4 Door



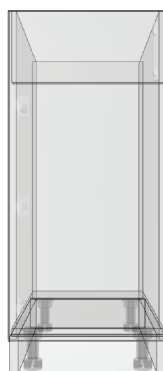
Any width available from 9 Inch to 60 Inch, and in any fraction of an inch.

Sink Base Cabinets are used to accommodate most any drop-in or undermount sink (for Apron-front or Farmhouse style sinks, see Grill Cabinets), and may also be used below drop-in coolers, drop-in burners, cooktops, and other appliances without face controls. The Full Height Door style sink base conceals a 6" tall apron behind doors at top and coordinates well with a continuous run of all full height door cabinets.

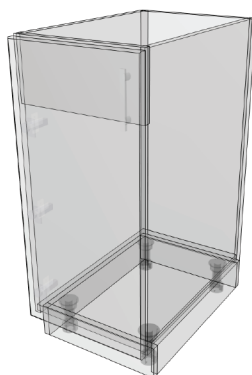
TOP View



FRONT View



3D View



Standard Height: 34.75" overall (31" box)

Standard Depth: 24" overall (23" box)

Available Modifications:

Extend Side Panel (L/R)	+12"
Increase Height	+6"
Decrease Height	-6"
Decrease Width	-3"
Increase Depth	+12"
Decrease Depth	-18"

Add Shelf (up to 36"W) +2

Add Pull-Out Tray (up to 30"W) +2

NOTE: Shelves and Pullout Trays in Sink Cabinets may interfere with utilities below the sink or other appliance. Consult with your Account Manager for inclusion of these items in your specific design.

Visit werever.com to view available colors and door styles for all cabinets.

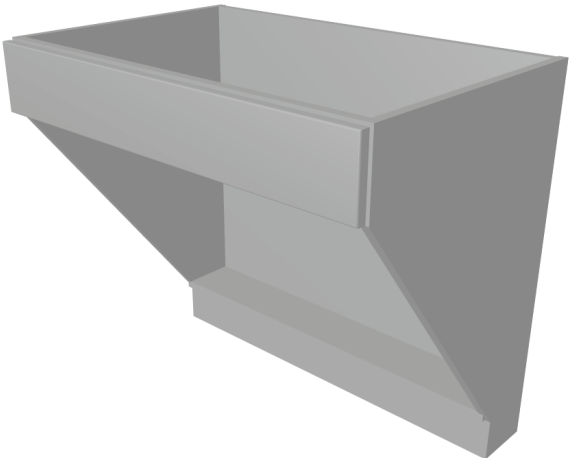
All Werever Outdoor Cabinets are constructed from solid, 3/4" high-density polyethylene

Specification Sheet

ADA Sink Base Cabinet

Available Models:

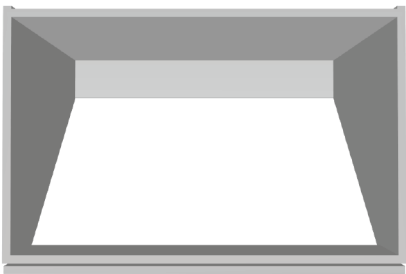
- ADA-SB-36
- ADA-SB-39



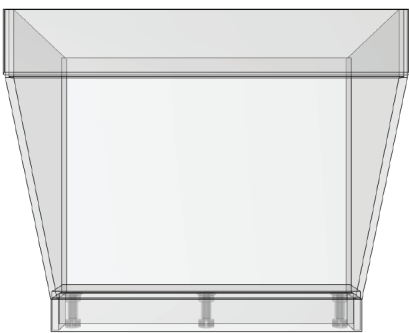
Any width available from 36 Inch to 39 Inch, and in any fraction of an inch. This cabinet may be modified to a smaller than 36" width upon special request.

ADA Sink Base Cabinets are designed for accessibility. This cabinet model may be used with any compatible drop-in or undermount sink supported by your countertop. An additional panel to be used as pipe/P-Trap cover may be ordered as an add-on accessory and must be specified as an additional item. Please consult with your Account Manager for additional information.

TOP View



FRONT View

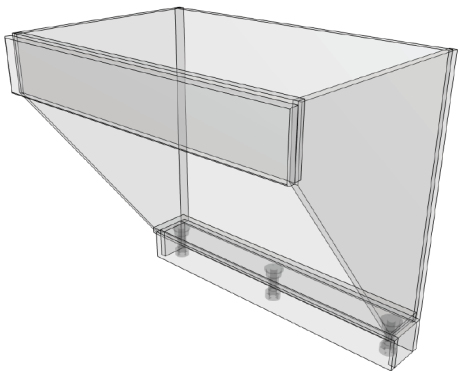


Standard Height: 32.5" overall (28.75" box)
Standard Depth: 24" overall (23" box)

Available Modifications:

Extend Side Panel (L/R)	+12"
Increase Height	+8.25"
Decrease Height	-3.75"
Decrease Width	-6"
Increase Depth	+12"
Decrease Depth	-12"

3D View



NOTE: Some modifications to the ADA Sink Base Cabinet may not meet the Standards of the Americans with Disability Act. Please consult the published ADA Standards for Accessible Design at www.ada.gov.

Visit werenever.com to view available colors and door styles for all cabinets.

All Werever Outdoor Cabinets are constructed from solid, 3/4" high-density polyethylene

Specification Sheet

ADA Sink Base Cabinet with Full Height Doors

Available Models:

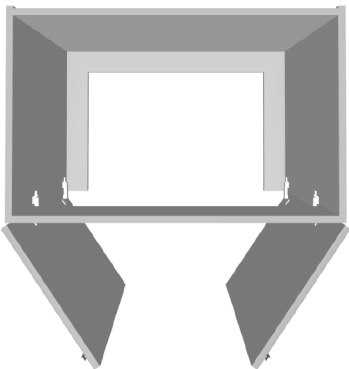
- ADA-SBFH-36
- ADA-SBFH-39



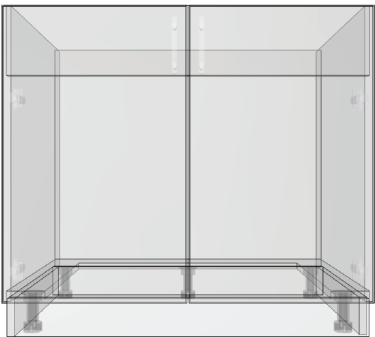
Any width available from 36 Inch to 39 Inch, and in any fraction of an inch. This cabinet may be modified to a smaller than 36" width upon special request.

ADA Sink Base Cabinets are designed for accessibility. This cabinet model may be used with any compatible drop-in or undermount sink supported by your countertop. Additional ADA toe kick brackets, not provided, must be used at install. Please consult with your Account Manager for additional information.

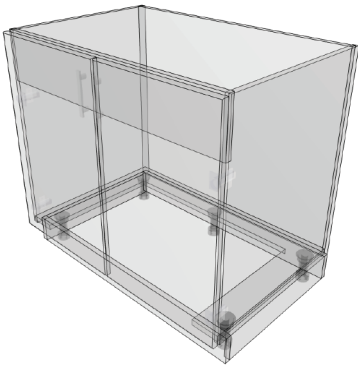
TOP View



FRONT View



3D View



Standard Height: 32.5" overall (28.75" box)
Standard Depth: 24" overall (23" box)

Available Modifications:

Extend Side Panel (L/R)	+12"
Increase Height	+8.25"
Decrease Height	-3.75"
Decrease Width	-6"
Increase Depth	+12"
Decrease Depth	-12"

NOTE: Some modifications to the ADA Sink Base Cabinet may not meet the Standards of the Americans with Disability Act. Please consult the published ADA Standards for Accessible Design at www.ada.gov.

Visit werenever.com to view available colors and door styles for all cabinets.

All Werever Outdoor Cabinets are constructed from solid, 3/4" high-density polyethylene

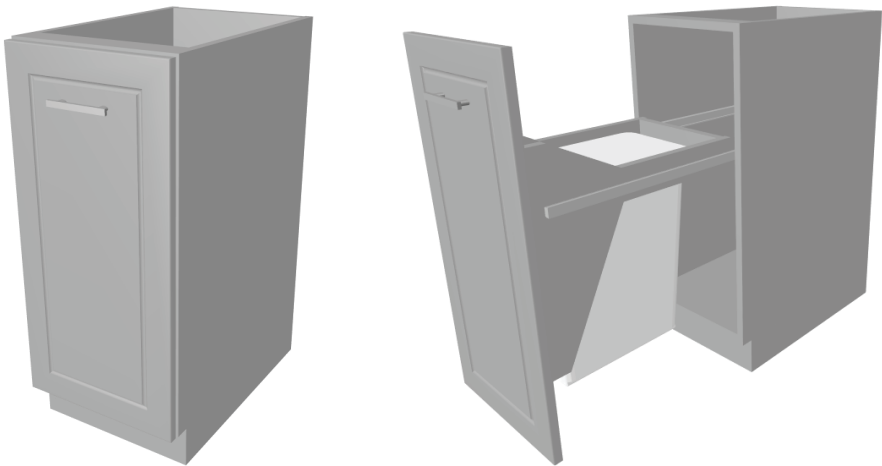
Specification Sheet

Pullout Trash Cabinet with Full Height Door

Available Models:

- TC-15 Single Trash
- TC-18 Single Trash

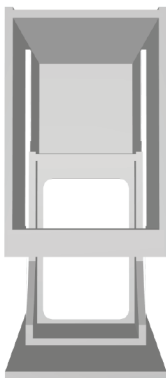
Trash bin included.



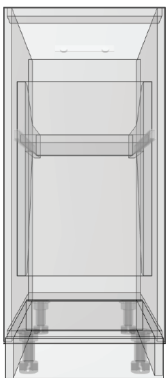
Single Pullout Trash available in any width from 15 Inch to 18 Inch wide.

Adding a Pullout Trash Cabinet to your Outdoor Kitchen creates convenience. Whether hosting a gathering or preparing a meal for you and your family, easy access to the Pullout Trash makes clean-up a breeze. Position a Pullout Trash Cabinet near a sink for easy clean-up, or at the end of a cabinetry run for easy access for your guests to dispose of trash and recyclables.

TOP View



FRONT View



Standard Height: 34.75" overall (31" box)
Standard Depth: 24" overall (23" box)

Available Modifications:

Extend Side Panel (L/R)	+12"
Decrease Height	-6"
Increase Depth	+12"

3D View



Visit werenever.com to view available colors and door styles for all cabinets.

All Werenver Outdoor Cabinets are constructed from solid, 3/4" high-density polyethylene

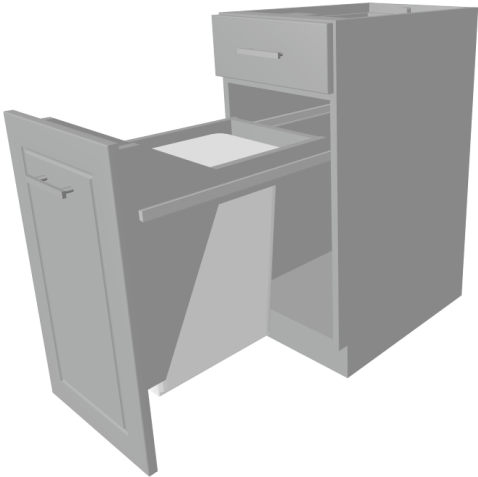
Specification Sheet

Pullout Trash Cabinet with Top Drawer

Available Models:

- TC-15-D Single Trash
- TC-18-D Single Trash

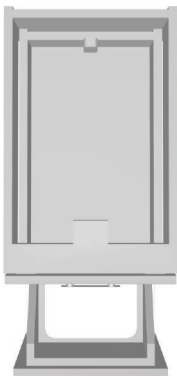
Trash bin included.



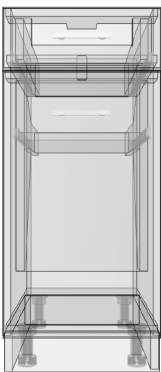
Single Pullout Trash available in any width from 15 Inch to 18 Inch wide.

Adding a Pullout Trash Cabinet to your Outdoor Kitchen creates convenience. Whether hosting a gathering or preparing a meal for you and your family, easy access to the Pullout Trash makes clean-up a breeze. Position a Pullout Trash Cabinet near a sink for easy clean-up, or at the end of a cabinetry run for easy access for your guests to dispose of trash and recyclables.

TOP View



FRONT View

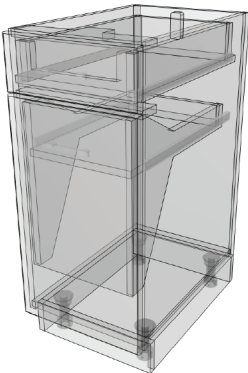


Standard Height: 34.75" overall (31" box)
Standard Depth: 24" overall (23" box)

Available Modifications:

Extend Side Panel (L/R)	+12"
Increase Height	+6"
Increase Depth	+12"

3D View



Visit werenever.com to view available colors and door styles for all cabinets.

All Werenever Outdoor Cabinets are constructed from solid, 3/4" high-density polyethylene

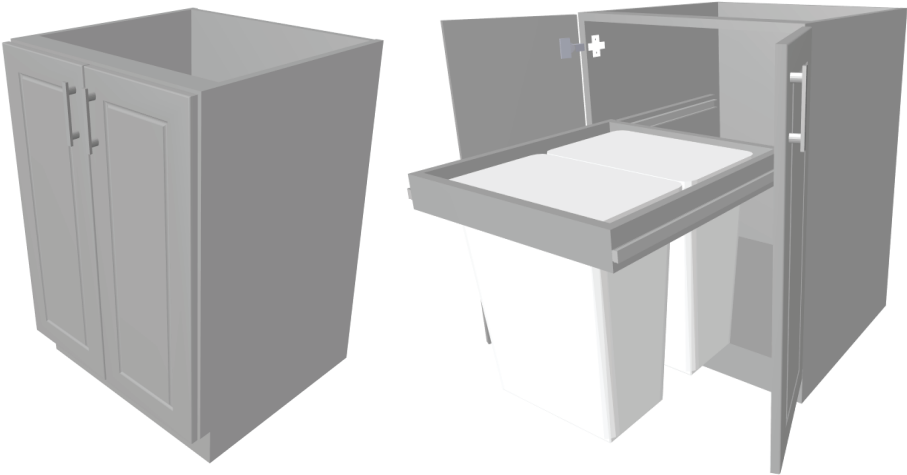
Specification Sheet

Double Pullout Trash Cabinet with Full Height Door

Available Models:

DTC-B-24 Double Trash

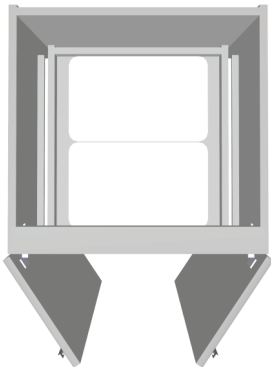
Trash bins included.



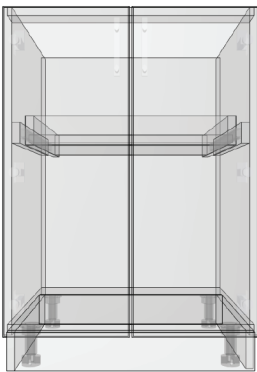
Double Pullout Trash available in any width from 21 Inch to 24 Inch wide.

Adding a Pullout Trash Cabinet to your Outdoor Kitchen creates convenience. Whether hosting a gathering or preparing a meal for you and your family, easy access to the Pullout Trash makes clean-up a breeze. Position a Pullout Trash Cabinet near a sink for easy clean-up, or at the end of a cabinetry run for easy access for your guests to dispose of trash and recyclables.

TOP View



FRONT View



3D View



Standard Height: 34.75" overall (31" box)
Standard Depth: 24" overall (23" box)

Available Modifications:

Extend Side Panel (L/R)	+12"
Increase Height	+6"
Decrease Height	-6"
Increase Depth	+12"
Decrease Width	-3"

Visit werever.com to view available colors and door styles for all cabinets.

All Werever Outdoor Cabinets are constructed from solid, 3/4" high-density polyethylene

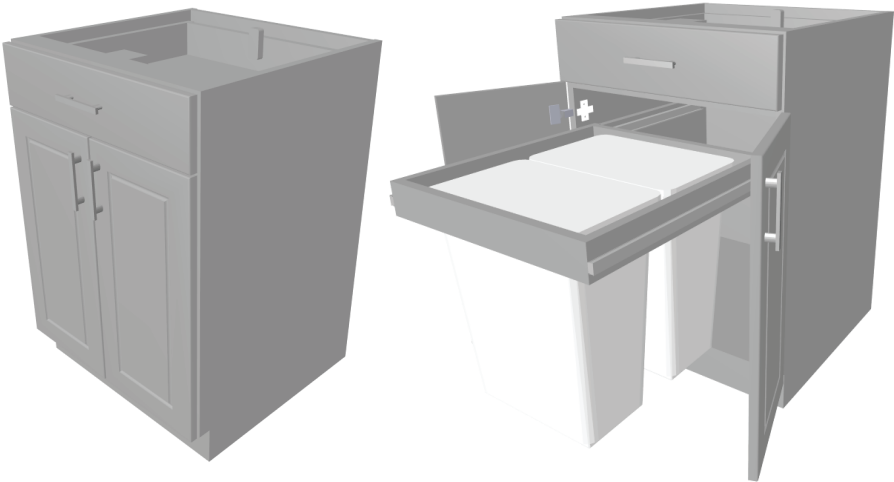
Specification Sheet

Double Pullout Trash Cabinet with Top Drawer

Available Models:

DTC-B-24-D Double Trash

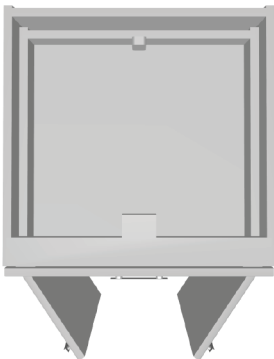
Trash bins included.



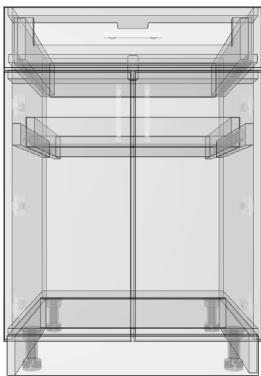
Double Pullout Trash available in any width from 21 Inch to 24 Inch wide.

Adding a Pullout Trash Cabinet to your Outdoor Kitchen creates convenience. Whether hosting a gathering or preparing a meal for you and your family, easy access to the Pullout Trash makes clean-up a breeze. Position a Pullout Trash Cabinet near a sink for easy clean-up, or at the end of a cabinetry run for easy access for your guests to dispose of trash and recyclables.

TOP View



FRONT View



Standard Height: 34.75" overall (31" box)
Standard Depth: 24" overall (23" box)

Available Modifications:

Extend Side Panel (L/R)	+12"
Increase Height	+6"
Increase Depth	+12"
Decrease Width	-3"

3D View



Visit werever.com to view available colors and door styles for all cabinets.

All Werever Outdoor Cabinets are constructed from solid, 3/4" high-density polyethylene

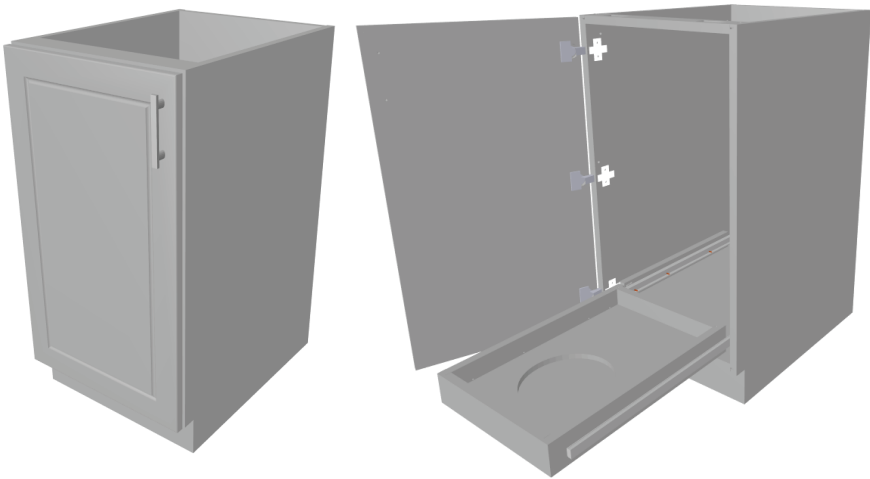
Specification Sheet

Pullout LP Tank Cabinet

Available Models:

LPC-18 R/L

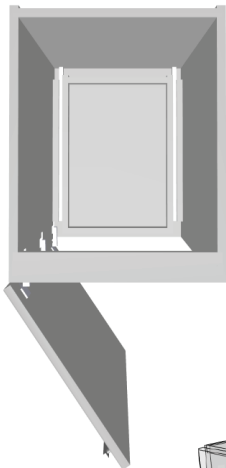
Fixed width at 18" wide.



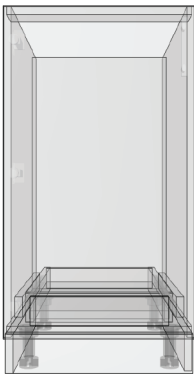
LP Tank Cabinet with Full-Height Door (LPC-18).

The Pullout LP Tank Cabinet stores a standard size 5G/25lb LP gas tank for your Grill, Side Burner, or other gas cooking appliance. Position this cabinet adjacent to or between the gas appliance cabinets in your design plan. The pull-out feature makes tank exchange or refill easy.

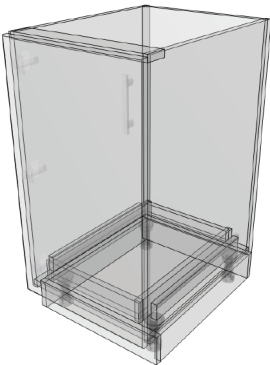
TOP View



FRONT View



3D View



Standard Height: 34.75" overall (31" box)
Standard Depth: 24" overall (23" box)

Available Modifications:

Extend Side Panel (L/R)	+12"
Increase Height	+6"
Decrease Height	-6"
Increase Depth	+6"

Visit werenever.com to view available colors and door styles for all cabinets.

All Werever Outdoor Cabinets are constructed from solid, 3/4" high-density polyethylene

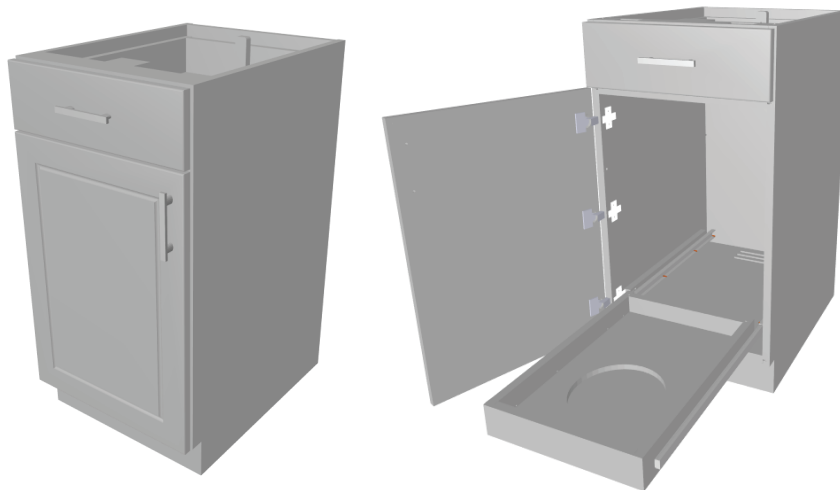
Specification Sheet

Pullout LP Tank Cabinet With Top Drawer

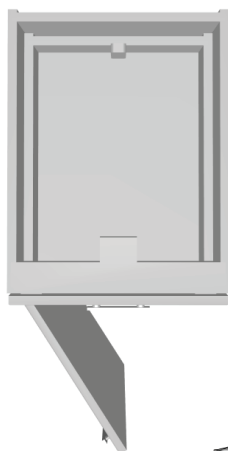
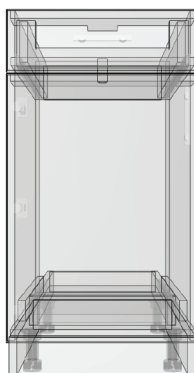
Available Models:

LPC-18-D R/L

Fixed width at 18" wide.

**LP Tank Cabinet with Top Drawer (LPC-18-D).**

The Pullout LP Tank Cabinet stores a standard size 5G/25lb LP gas tank for your Grill, Side Burner, or other gas cooking appliance. Position this cabinet adjacent to or between the gas appliance cabinets in your design plan. The pull-out feature makes tank exchange or refill easy. A top drawer added to this cabinet provides additional storage space for grilling tools or utensils right where they are needed most.

TOP View**FRONT View****3D View****Standard Height:** 34.75" overall (31" box)**Standard Depth:** 24" overall (23" box)**Available Modifications:**

Extend Side Panel (L/R)	+12"
Increase Height	+6"
Increase Depth	+6"

NOTE: Decrease height of the LPC-18 cabinet only (cannot decrease height of LP Tank Cabinet with Top Drawer).

Visit werever.com to view available colors and door styles for all cabinets.

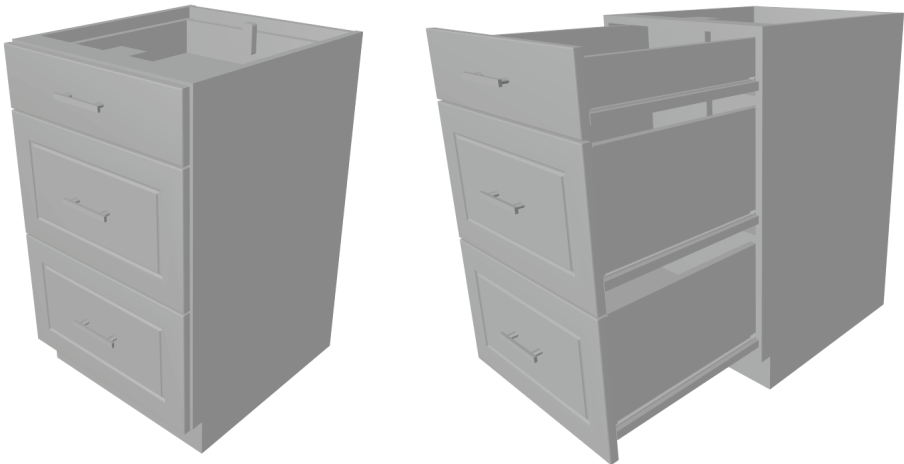
All Werever Outdoor Cabinets are constructed from solid, 3/4" high-density polyethylene

Specification Sheet

3-Drawer Base Cabinet

Available Models:

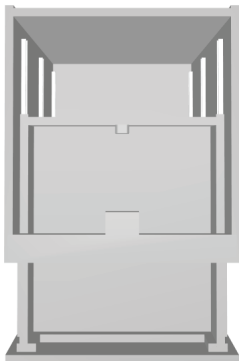
- DB-9-3
- DB-12-3
- DB-15-3
- DB-18-3
- DB-21-3



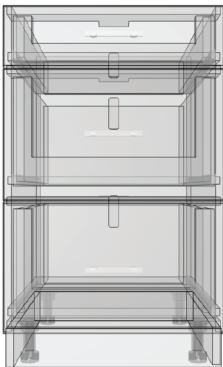
Any width available from 9 Inch to 21 Inch, and in any fraction of an inch.

Drawer Base Cabinets are often the most functional cabinets in an outdoor kitchen. The 3-Drawer Base provides a top drawer for small items, and two deep drawers for larger items such as pots, pans, and larger grilling tools. Position a Drawer Base Cabinet near your cooking areas for easy access to your utensils and accessories.

TOP View



FRONT View



3D View



Standard Height: 34.75" overall (31" box)
Standard Depth: 24" overall (23" box)

Available Modifications:

Extend Side Panel (L/R)	+12"
Decrease Height	-6"
Decrease Width	-3"
Increase Depth	+12"
Decrease Depth	-9"

NOTE: Request for the top drawer of this cabinet to be a false face and install this cabinet below a drop-in appliance for additional drawer utility in your outdoor kitchen.

Reference Models:
SB-9-2, SB-12-2, SB-15-2, SB-18-2, SB-21-2

Visit werever.com to view available colors and door styles for all cabinets.

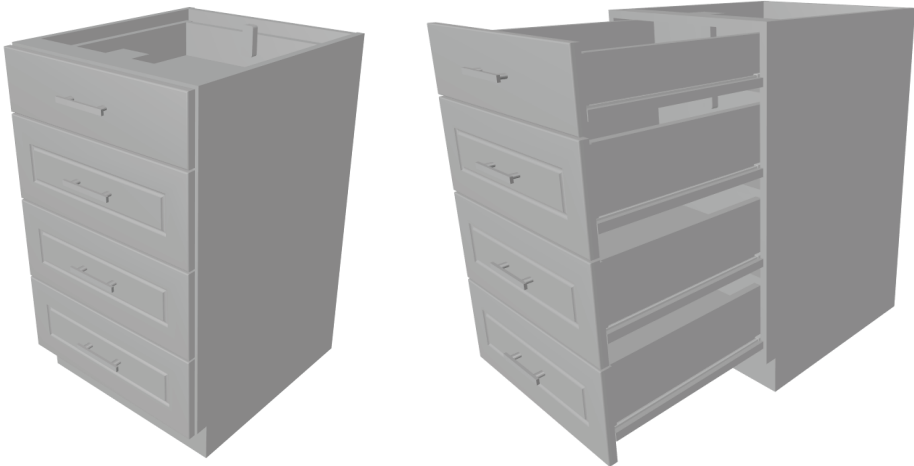
All Werever Outdoor Cabinets are constructed from solid, 3/4" high-density polyethylene

Specification Sheet

4-Drawer Base Cabinet

Available Models:

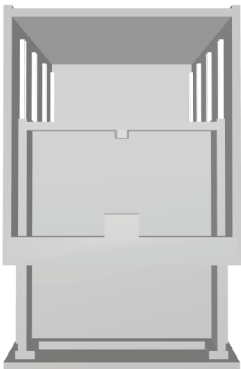
- DB-12-4
- DB-15-4
- DB-18-4
- DB-21-4
- DB-24-4
- DB-27-4



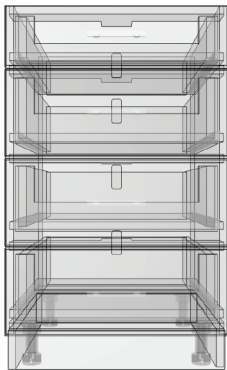
Any width available from 12 Inch to 27 Inch, and in any fraction of an inch.

Drawer Base Cabinets are often the most functional cabinets in an outdoor kitchen. The 4-Drawer Base provides a top drawer for small items, and three equal sized drawers below for utensils, mitts, grill tools, foil, paper towels, and more. Position a Drawer Base Cabinet near your cooking areas for easy access to your utensils and accessories.

TOP View



FRONT View



3D View



Standard Height: 34.75" overall (31" box)
Standard Depth: 24" overall (23" box)

Available Modifications:

Extend Side Panel (L/R)	+12"
Increase Height	+6"
Decrease Height	-6"
Decrease Width	-3"
Increase Depth	+12"
Decrease Depth	-9"

NOTE: Request for the top drawer of this cabinet to be a false face and install this cabinet below a drop-in appliance for additional drawer utility in your outdoor kitchen.

Reference Models:

SB-12-3, SB-15-3, SB-18-3, SB-21-3, SB-24-3, SB-27-3

Visit werenever.com to view available colors and door styles for all cabinets.

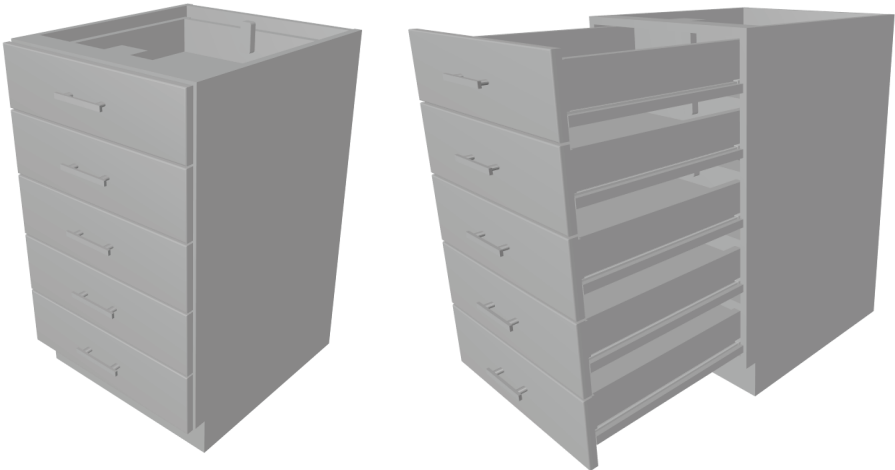
All Werenver Outdoor Cabinets are constructed from solid, 3/4" high-density polyethylene

Specification Sheet

5-Drawer Base Cabinet

Available Models:

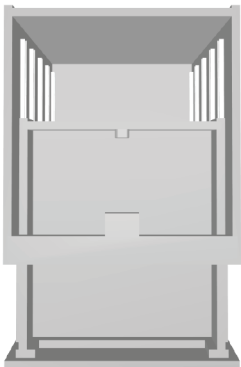
- DB-12-5
- DB-15-5
- DB-18-5
- DB-21-5
- DB-24-5
- DB-27-5
- DB-30-5



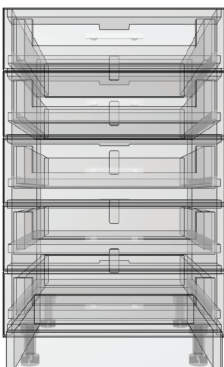
Any width available from 12 Inch to 30 Inch, and in any fraction of an inch.

Drawer Base Cabinets are often the most functional cabinets in an outdoor kitchen. The 5-Drawer Base provides a top drawer for small items, and four equal sized drawers below for things like utensils, foil, and place-mats. Position a Drawer Base Cabinet near your cooking areas for easy access to your utensils and accessories.

TOP View



FRONT View



3D View



Standard Height: 34.75" overall (31" box)
Standard Depth: 24" overall (23" box)

Available Modifications:

Extend Side Panel (L/R)	+12"
Increase Height	+6"
Decrease Width	-3"
Increase Depth	+12"
Decrease Depth	-9"

Visit werenever.com to view available colors and door styles for all cabinets.

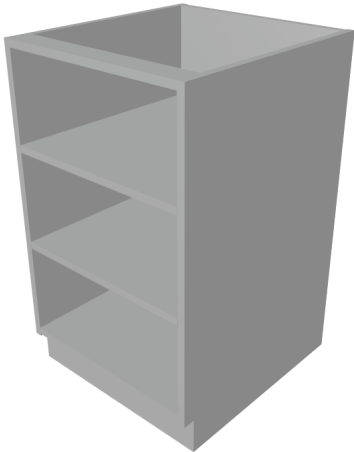
All Werenver Outdoor Cabinets are constructed from solid, 3/4" high-density polyethylene

Specification Sheet

Open Base Cabinet

Available Models:

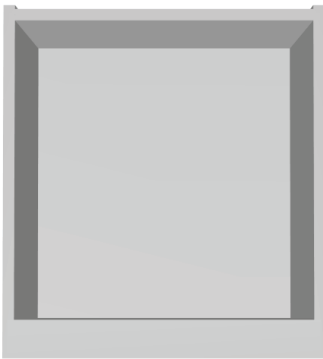
- OB-9
- OB-12
- OB-15
- OB-18
- OB-21
- OB-24
- OB-27
- OB-30



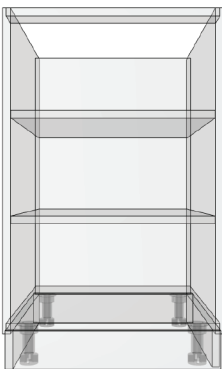
Any width available from 9 Inch to 30 Inch, and in any fraction of an inch.

Open Base Cabinets can serve a variety of purposes in your outdoor kitchen. This cabinet style is great for decorative items on display, unique baskets or bins that coordinate with your décor, and even added under-counter workspace to place items if the countertop is crowded when cooking and serving. Shelves are adjustable and removeable, and additional shelves can be added to meet your needs.

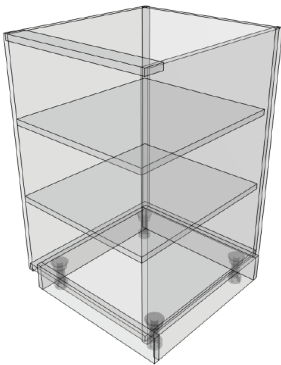
TOP View



FRONT View



3D View



Standard Height: 34.75" overall (31" box)
Standard Depth: 23" overall (23" box)

Available Modifications:

Extend Side Panel (L/R)	+12"
Increase Height	+6"
Decrease Height	+6"
Decrease Width	-3"
Increase Depth	+12"
Decrease Depth	-18"
Add Shelf (up to 30"W)	+1"

Special Modifications:

Can request up to 36" width. Nosing added to shelves in cabinet wider than 30"

Visit werenever.com to view available colors and door styles for all cabinets.

All Werever Outdoor Cabinets are constructed from solid, 3/4" high-density polyethylene

Specification Sheet

Grill Cabinet

“Warming Drawer”

Available Models:

- DG-27 2 Door
- DG-30 2 Door
- DG-33 2 Door
- DG-36 2 Door
- DG-39 2 Door
- DG-42 4 Door
- DG-45 4 Door
- DG-48 4 Door
- DG-51 4 Door
- DG-54 4 Door
- DG-57 4 Door
- DG-60 4 Door
- DG-63 4 Door



Grill Cabinets are cut and built to order, with face plate, doors, and support structures designed and cut specifically for your Grill model and your countertop thickness. Every Grill installed in a Werever Cabinet requires an Insulating Jacket for combustible enclosures from the Grill Manufacturer.

Some Grills allow for a Warming Drawer to be installed in the cabinet below. Alternatively, a Warming Drawer can be installed in the top face panel of a separate Grill Cabinet. Consult with your Account Manager for more information on Grill Cabinets and important Appliance specifications.

Any width available from 27 Inch to 63 Inch (64" wide available as needed). Overall size of the Grill Cabinet is determined based on the cut-out and clearance specifications from the Grill and Insulating Jacket Manufacturer. Consult with your Account Manager for the correct size Grill Cabinet.

Standard Height: 34.75" overall (31" box)
Standard Depth: 27" overall (26" box)

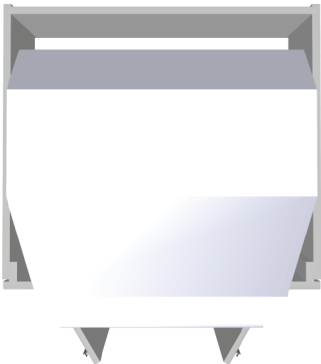
Available Modifications:

Extend Side Panel (L/R)	+12"
Increase Height	+6"
Decrease Height	-6"
Decrease Width	-3"
Increase Depth	+12"
Decrease Depth	-3"

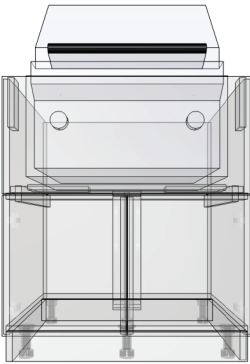
NOTE: Most Grills with Insulating Jackets will require a 27-30" deep cabinet. Consult with your Account Manager for the correct size Grill Cabinet for your specified Appliances.

Visit werenever.com to view available colors and door styles for all cabinets.

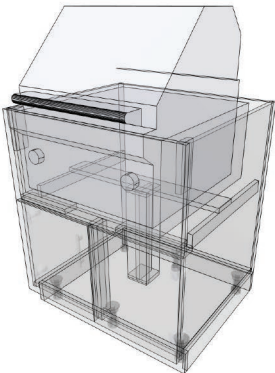
TOP View



FRONT View



3D View



All Werever Outdoor Cabinets are constructed from solid, 3/4" high-density polyethylene

Specification Sheet

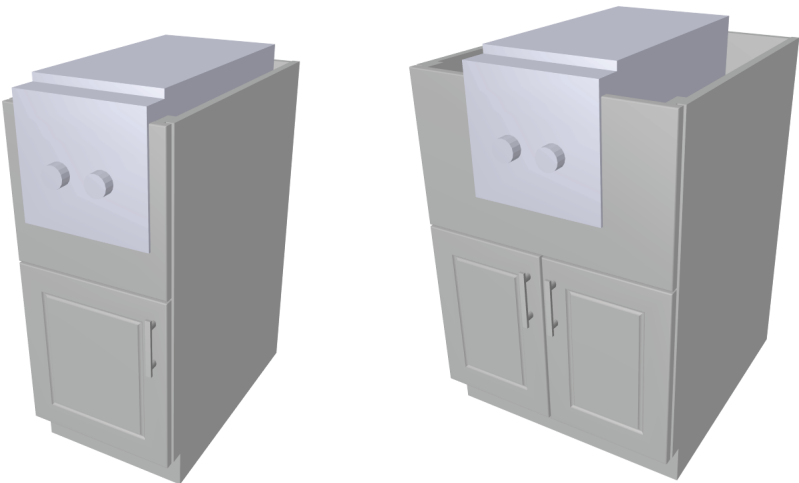
Side Burner Cabinet

Available Models:

- SIDE-15 1 Door R/L
- SIDE-18 1 Door R/L
- SIDE-21 2 Door
- SIDE-24 2 Door

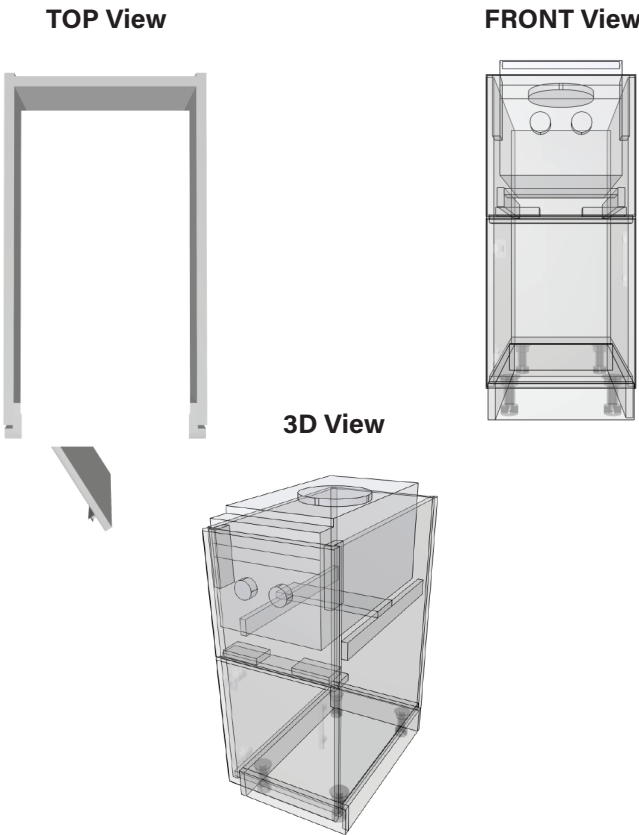
Any width available from 15 Inch to 24 Inch, and in any fraction of an inch.

For larger Burner units and Power Burners, a Grill Cabinet may be required.



Side Burner Cabinets are cut and built to order, with face plate, doors, and support structures designed and cut specifically for your Burner model and your countertop thickness. Most Burners installed in a Werever Cabinet will require an Insulating Jacket for combustible enclosures from the Grill Manufacturer.

Consult with your Account Manager for the correct size Side Burner Cabinet.



Standard Height: 34.75" overall (31" box)
Standard Depth: 27" overall (26" box)

Available Modifications:

Extend Side Panel (L/R)	+12"
Increase Height	+6"
Decrease Height	-6"
Decrease Width	-3"
Increase Depth	+12"
Decrease Depth	-3"

NOTE: Most Side Burners will require a 27-30" deep cabinet. Consult with your Account Manager for the correct size Side Burner Cabinet for your specified Appliances.

Visit werenever.com to view available colors and door styles for all cabinets.

All Werever Outdoor Cabinets are constructed from solid, 3/4" high-density polyethylene

Specification Sheet

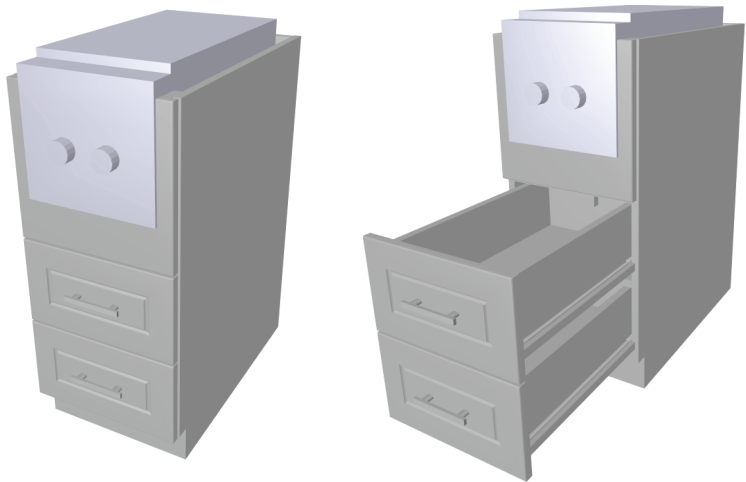
Side Burner Cabinet with Drawers

Available Models:

- SIDE-15-2
- SIDE-18-2
- SIDE-21-2
- SIDE-24-2

Any width available from 15 Inch to 24 Inch, and in any fraction of an inch.

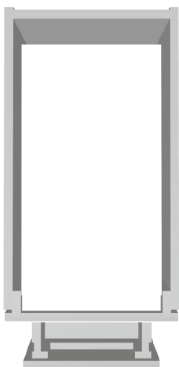
Consult with your Account Manager for the correct size Side Burner Cabinet for your appliance.



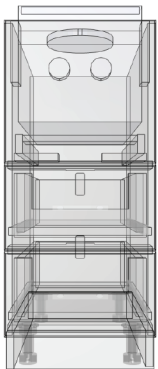
Side Burner Cabinets are cut and built to order, with face plate, doors, and support structures designed and cut specifically for your Burner model. Most Burners installed in a Werever Cabinet will require an Insulating Jacket for combustible enclosures from the Grill Manufacturer.

Consult with your Account Manager for the correct size Side Burner Cabinet.

TOP View



FRONT View

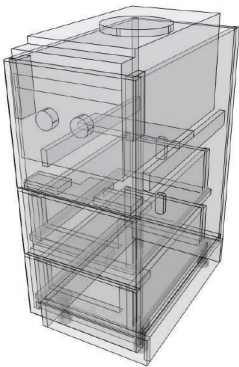


Standard Height: 34.75" overall (31" box)
Standard Depth: 27" overall (26" box)

Available Modifications:

Extend Side Panel (L/R)	+12"
Increase Height	+6"
Decrease Width	-3"
Increase Depth	+12"
Decrease Depth	-3"

3D View



NOTE: Most Side Burners will require a 27-30" deep cabinet. Consult with your Account Manager for the correct size Side Burner Cabinet for your specified Appliances.

Visit werenever.com to view available colors and door styles for all cabinets.

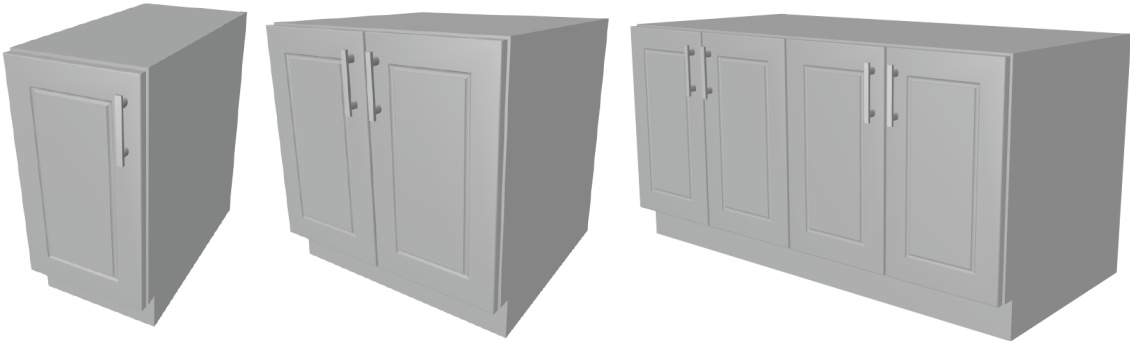
All Werever Outdoor Cabinets are constructed from solid, 3/4" high-density polyethylene

Specification Sheet

Grill Pedestal Cabinet with Door

Available Models:

- GP-9 1 Door R/L
- GP-12 1 Door R/L
- GP-15 1 Door R/L
- GP-18 1 Door R/L
- GP-21 2 Door
- GP-24 2 Door
- GP-27 2 Door
- GP-30 2 Door
- GP-33 2 Door
- GP-36 2 Door
- GP-39 2 Door
- GP-42 4 Door
- GP-45 4 Door
- GP-48 4 Door



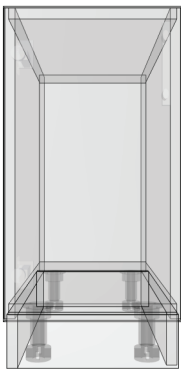
Grill Pedestal Cabinets provide functional storage and added support to carry the weight of a variety of grill and smoker models. Many projects include Kamado-style grills and smokers, and a Grill Pedestal Cabinet positioned below your kamado-style grill allows you to incorporate this unit as a part of your outdoor kitchen.

Every Grill installed in, on or near a Werever Cabinet requires an Insulating Jacket for combustible enclosures from the Grill Manufacturer, or appropriate clearance to combustible materials. Consult with your Account Manager for the correct use and size of Grill Pedestal Cabinet.

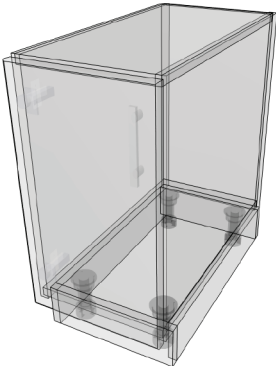
TOP View



FRONT View



3D View



Standard Height: 24.75" overall (21" box)
Standard Depth: 24" overall (23" box)

Available Modifications:

- | | |
|-------------------------|------|
| Extend Side Panel (L/R) | +12" |
| Increase Height | +10" |
| Decrease Height | -9" |
| Decrease Width | -3" |
| Increase Depth | +15" |
| Decrease Depth | -9" |

NOTE: Special modifications can be made to the height and depth of many Grill Pedestal Cabinet models to create Bench Seating that coordinates with your Outdoor Kitchen. Add custom seat cushions made by your local upholsterer for comfortable and functional seating.

Visit werever.com to view available colors and door styles for all cabinets.

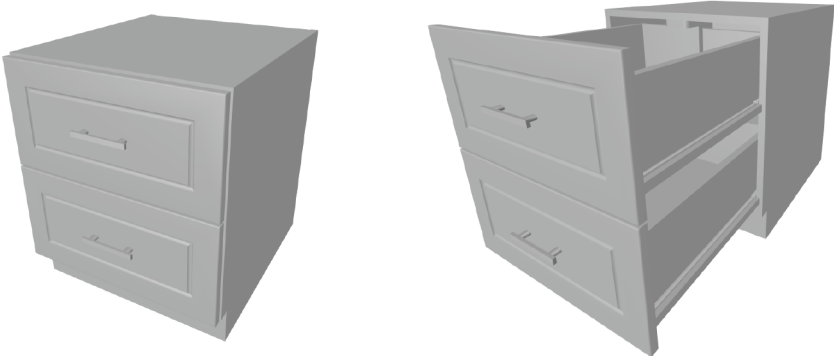
All Werever Outdoor Cabinets are constructed from solid, 3/4" high-density polyethylene

Specification Sheet

Grill Pedestal Cabinet with Drawers

Available Models:

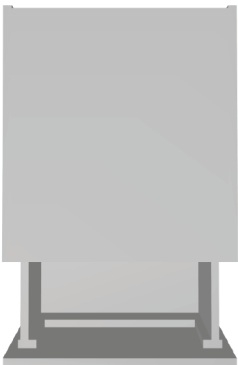
GP-9-D	2 Drawers
GP-12-D	2 Drawers
GP-15-D	2 Drawers
GP-18-D	2 Drawers
GP-21-D	2 Drawers



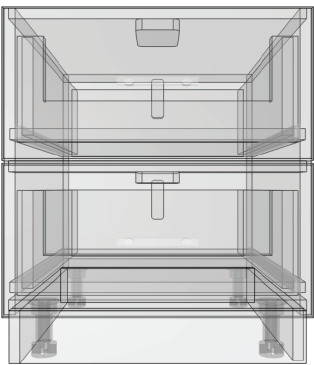
Grill Pedestal Cabinets provide functional storage and added support to carry the weight of a variety of grill and smoker models. Many projects include Kamado-style grills and smokers, and a Grill Pedestal Cabinet positioned below your kamado-style grill allows you to incorporate this unit as a part of your outdoor kitchen. The Pedestal Cabinet with Drawers adds extra functionality to your design plan, providing storage for smaller items including utensils, grill tools, foil and more.

Every Grill installed in, on, or near a Werever Cabinet requires an Insulating Jacket for combustible enclosures from the Grill Manufacturer, or appropriate clearances to combustible materials. Consult with your Account Manager for the correct use and size of Grill Pedestal Cabinet.

TOP View



FRONT View

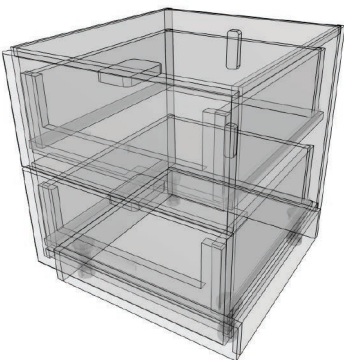


Standard Height: 24.75" overall (21" box)
Standard Depth: 24" overall (23" box)

Available Modifications:

Extend Side Panel (L/R)	+12"
Increase Height	+4"
Decrease Height	-9"
Decrease Width	-3"
Increase Depth	+15"

3D View



NOTE: Special modifications can be made to the height and depth of many Grill Pedestal Cabinet models to create Bench Seating that coordinates with your Outdoor Kitchen. Add custom seat cushions made by your local upholsterer for comfortable and functional seating.

Visit werever.com to view available colors and door styles for all cabinets.

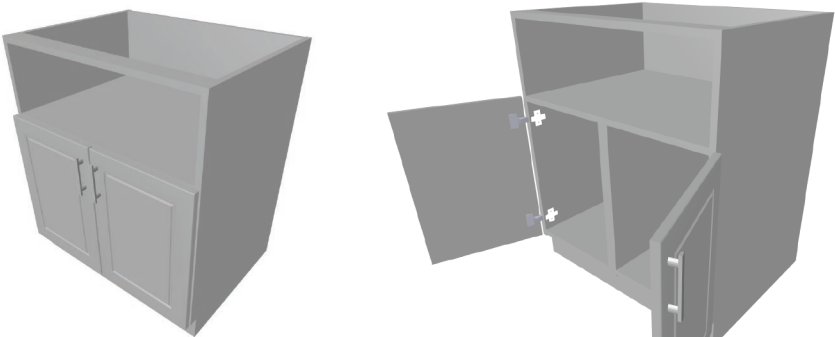
All Werever Outdoor Cabinets are constructed from solid, 3/4" high-density polyethylene

Specification Sheet

Built-In Appliance Pedestal Cabinet

Available Models:

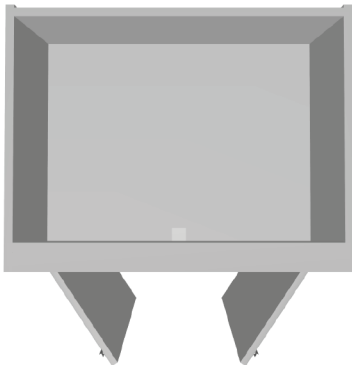
- BAP-24 2 Doors
- BAP-27 2 Doors
- BAP-30 2 Doors
- BAP-33 2 Doors
- BAP-36 2 Doors



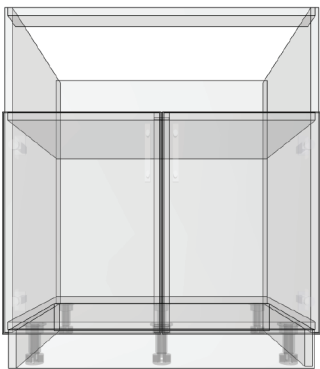
The Built-In Appliance Pedestal Cabinet provides functional storage and added support to carry the weight of a variety of appliances. The most common use of this cabinet is with Kama-do-style grills. The front stretcher and raised sides allow for countertop to surround the unit for a true built-in application. The open space in this cabinet may also be used to house a microwave or other small appliance.

Every Grill installed in, on, or near a Werever Cabinet requires maintaining appropriate clearances to combustible materials. Consult with your Account Manager for the correct use and size of the Built-In Appliance Pedestal Cabinet.

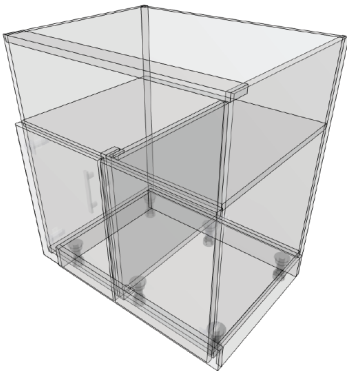
TOP View



FRONT View



3D View



Standard Height: 34.75" overall (31" box)
Standard Depth: 24" overall (23" box)

Available Modifications:

- | | |
|-------------------------|------|
| Extend Side Panel (L/R) | +12" |
| Increase Height | +6" |
| Decrease Height | -12" |
| Decrease Width | -3" |
| Increase Depth | +15" |
| Decrease Depth | -3" |

NOTE: The height of the pedestal within this cabinet can be increased and decreased to accommodate the height of what is being stored or installed in the open area above storage.

Visit werever.com to view available colors and door styles for all cabinets.

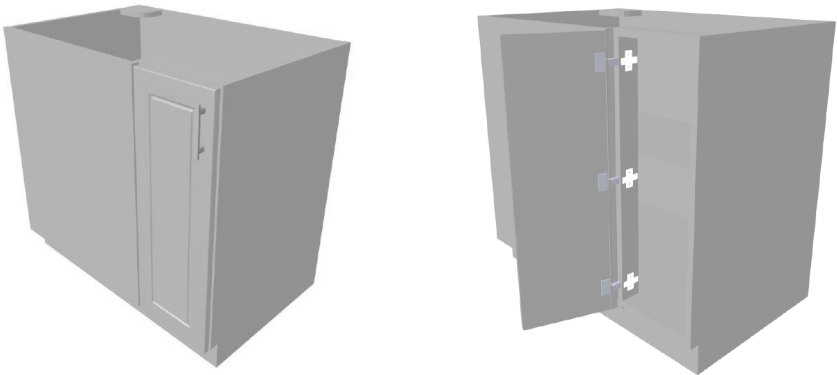
All Werever Outdoor Cabinets are constructed from solid, 3/4" high-density polyethylene

Specification Sheet

Blind Base Corner Cabinet

Available Models:

- BBC-36 1 Door R/L
- BBC-42 1 Door R/L



Blind Base Corner Cabinets provide extra storage in what may otherwise be dead space in the corner of your project. This cabinet includes a set-back adjustable shelf so you may store both taller and shorter items. If your project layout has a corner, ask your Account Manager to maximize storage with a Blind Base Corner Cabinet.

Any width available from 36 Inch to 42 Inch, and in any fraction of an inch.

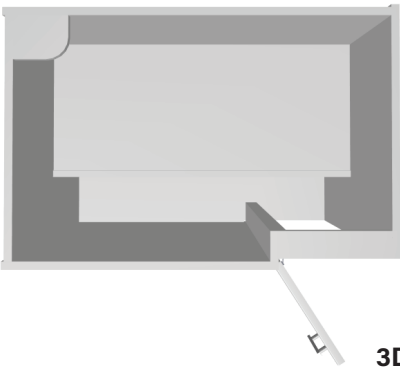
TOP View

FRONT View

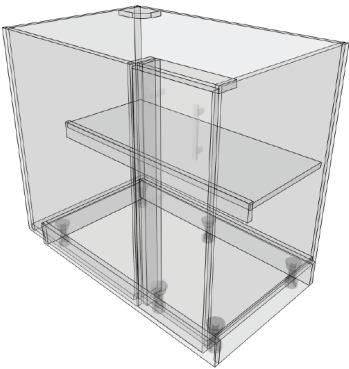
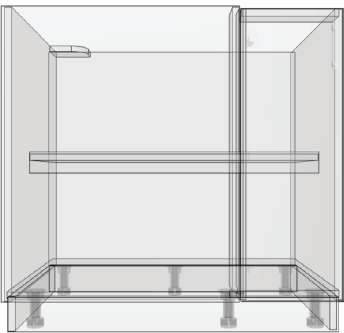
Standard Height: 34.75" overall (31" box)
Standard Depth: 24" overall (24" box)

Available Modifications:

- | | |
|-----------------|------|
| Increase Height | +6" |
| Decrease Height | -6" |
| Decrease Width | -6" |
| Increase Depth | +12" |
| Decrease Depth | -9" |



3D View



Visit werever.com to view available colors and door styles for all cabinets.

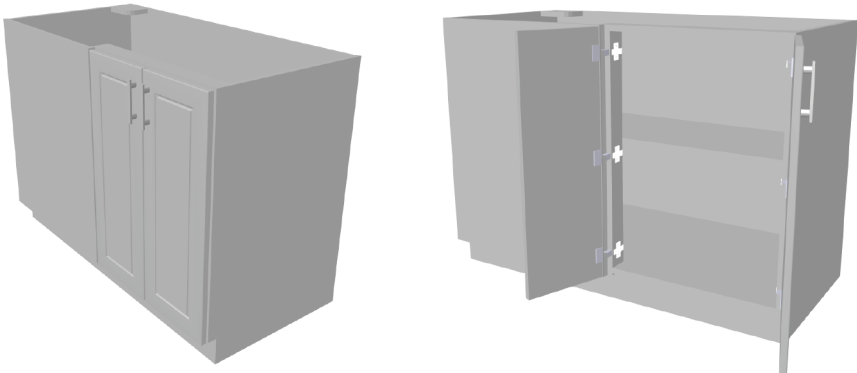
All Werever Outdoor Cabinets are constructed from solid, 3/4" high-density polyethylene

Specification Sheet

Blind Base Double-Door Corner Cabinet

Available Models:

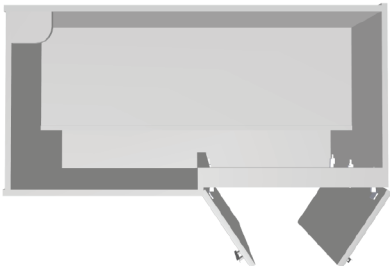
BBC-48 2 Door R/L



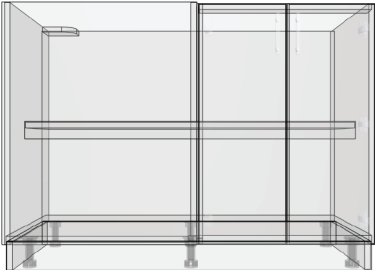
Blind Base Corner Cabinets provide extra storage in what may otherwise be dead space in the corner of your project. This cabinet includes a set-back adjustable shelf so you may store both taller and shorter items. If your project layout has a corner, ask your Account Manager to maximize storage with a Blind Base Corner Cabinet.

Any width available from 42 Inch to 48 Inch, and in any fraction of an inch.

TOP View



FRONT View

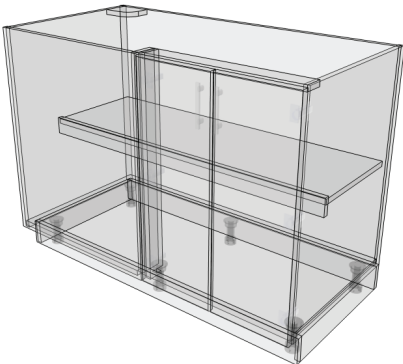


Standard Height: 34.75" overall (31" box)
Standard Depth: 24" overall (24" box)

Available Modifications:

Increase Height	+6"
Decrease Height	-6"
Decrease Width	-6"
Increase Depth	+12"
Decrease Depth	-9"

3D View



Visit werenever.com to view available colors and door styles for all cabinets.

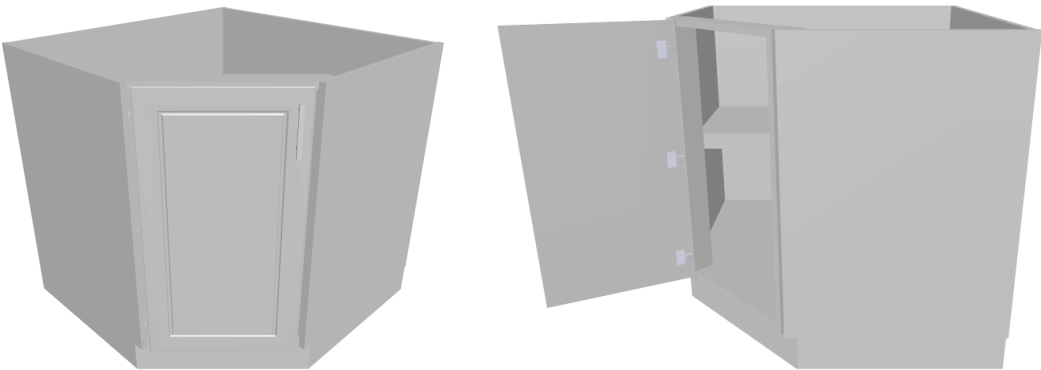
All Werenver Outdoor Cabinets are constructed from solid, 3/4" high-density polyethylene

Specification Sheet

Diagonal Corner Cabinet

Available Models:

DCC-36x36	1 Door	R/L
DCC-36x39	1 Door	R/L
DCC-39x36	1 Door	R/L
DCC-39x39	1 Door	R/L

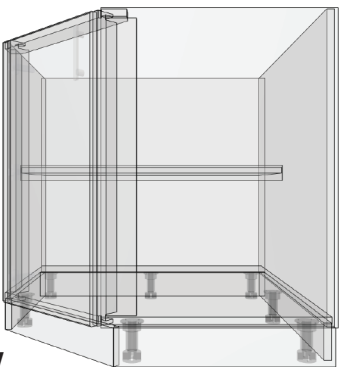
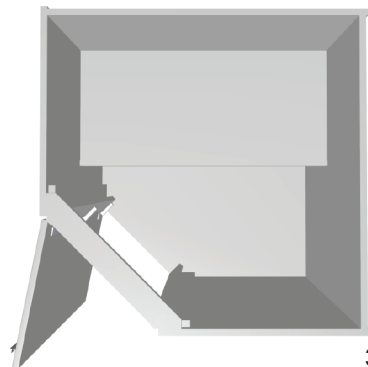


Size of Cabinet determined by depth of adjacent cabinets. Consult with your Account Manager for the correct size.

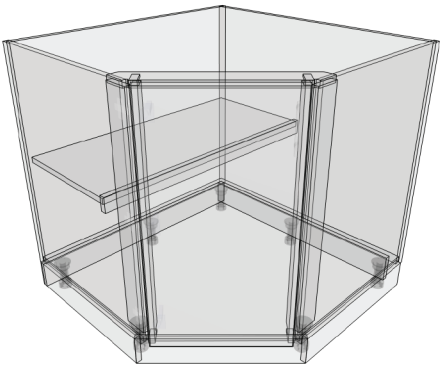
Diagonal Corner Cabinets maximize accessibility and storage space in a larger corner. If space allows for this cabinet in your design plan, you will benefit from full access to your corner through the door set on a 45-degree angle, and multiple options for storing all sizes of items. This cabinet includes one adjustable shelf.

TOP View

FRONT View



3D View



Standard Height: 34.75" overall (31" box)
Standard Depth: 42" overall (41" box diagonal)

Available Modifications:

Increase Height	+6"
Decrease Height	-6"

NOTE: Request a Diagonal Corner Pedestal Cabinet for your design if you would like your Kamado-style smoker in the corner. The Diagonal Corner Pedestal Cabinet is lowered to 24.75" overall height (modified height available) and includes additional support for your Kamado.

Reference Models:

- DCC-36-36-PEDESTAL
- DCC-36-39-PEDESTAL
- DCC-39-36-PEDESTAL
- DCC-39-39-PEDESTAL

Visit werever.com to view available colors and door styles for all cabinets.

All Werever Outdoor Cabinets are constructed from solid, 3/4" high-density polyethylene

Specification Sheet

Bi-Level Cabinets (Bar Cabinets)

Available Models:

Add "BL-" to the front of any standard Werever Cabinet model to make it Bi-Level, including:

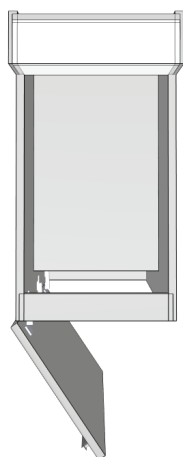
Full Height Door Cabinets
Base Cabinets with Top Drawer
Sink Base Cabinets
4-Drawer Base Cabinets
Pullout Trash Cabinets
Grill Cabinets
Side Burner Cabinets
Blind Base Cabinets
LP Tank Cabinets
Open Base Cabinets
Refrigerator End Panels



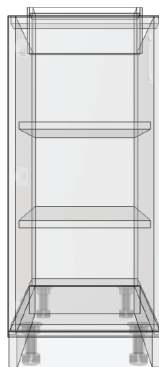
Bi-Level Cabinets allow you to create a bar section without building a retaining/pony wall. This cabinet has a 4.5" deep section integrated at back and rises 6" above the working surface (standard bar height). Bi-Level Cabinets are built as a single structural unit with no seams in the cabinet sides for strength and structural integrity at the sides and bar section.

The Bi-Level Cabinet design is available for all standard Werever Cabinets. Complete the look with Finished Back Panels in either plain or with decorative detail upgrade.

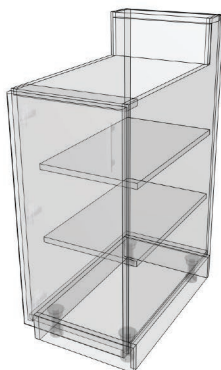
TOP View



FRONT View



3D View



Standard Depth: 28.5" overall (27.5" box)

Grill Cabinet Depth: 31.5" overall (30.5" box)

Available Modifications:

Most modifications available on standard cabinets, with the exception of height, are also available with Bi-Level Cabinets. Consult with your Account Manager for additional information.

Visit werever.com to view available colors and door styles for all cabinets.

All Werever Outdoor Cabinets are constructed from solid, 3/4" high-density polyethylene

Specification Sheet

Wall Cabinet

Available Models:

Single Door (R/L)

12" Tall W-912
W-1212
W-1512
W-1812

15" Tall W-915
W-1215
W-1515
W-1815

18" Tall W-918
W-1218
W-1518
W-1818

21" Tall W-921
W-1221
W-1521
W-1821

24" Tall W-924
W-1224
W-1524
W-1824

30" Tall W-930
W-1230
W-1530
W-1830

36" Tall W-936
W-1236
W-1536
W-1836

42" Tall W-942
W-1242
W-1542
W-1842

Double Door

12" Tall W-2112
W-2412
W-2712

15" Tall W-2115
W-2415
W-2715

18" Tall W-2118
W-2418
W-2718

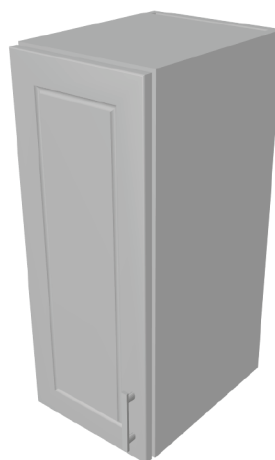
21" Tall W-2121
W-2421
W-2721

24" Tall W-2124
W-2424
W-2724

30" Tall W-2130
W-2430
W-2730

36" Tall W-2136
W-2436
W-2736

42" Tall W-2142
W-2442
W-2742



Wall Cabinets increase the amount of storage in your outdoor kitchen when structural wall space is available. Wall Cabinets taller than 18" include adjustable shelving for storage flexibility. Werever manufacturers Wall Cabinets with a standard depth of 15 Inches, to not only accommodate larger plates and other items, but to also accommodate reach over the deeper base cabinets and larger appliances typical in an Outdoor Kitchen.

Standard Depth: 15" overall (14" box)

Available Modifications:

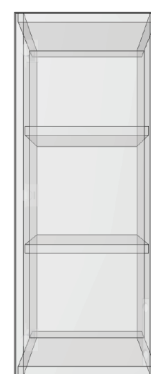
Any width available from 9 Inch to 27 Inch, and in any fraction of an inch.

Any height available from 9 Inch to 42 Inch, and in any fraction of an inch.

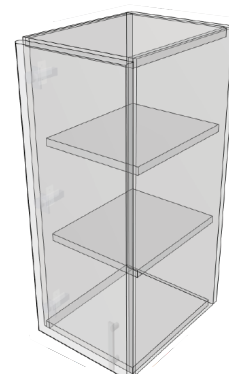
TOP View



FRONT View



3D View



Visit werever.com to view available colors and door styles for all cabinets.

All Werever Outdoor Cabinets are constructed from solid, 3/4" high-density polyethylene

Specification Sheet

Open Shelf Wall Cabinet

Available Models:

12" Tall	OSW-912	12" Tall	OSW-2112
	OSW-1212		OSW-2412
	OSW-1512		OSW-2712
	OSW-1812		

15" Tall	OSW-915	15" Tall	OSW-2115
	OSW-1215		OSW-2415
	OSW-1515		OSW-2715
	OSW-1815		

18" Tall	OSW-918	18" Tall	OSW-2118
	OSW-1218		OSW-2418
	OSW-1518		OSW-2718
	OSW-1818		

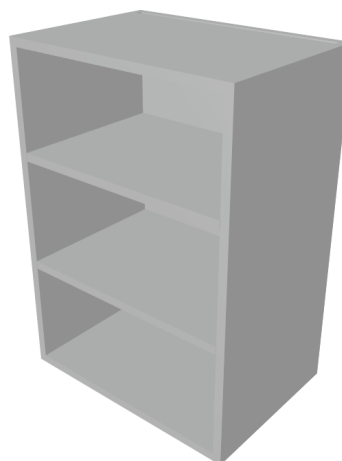
21" Tall	OSW-921	21" Tall	OSW-2121
	OSW-1221		OSW-2421
	OSW-1521		OSW-2721
	OSW-1821		

24" Tall	OSW-924	24" Tall	OSW-2124
	OSW-1224		OSW-2424
	OSW-1524		OSW-2724
	OSW-1824		

30" Tall	OSW-930	30" Tall	OSW-2130
	OSW-1230		OSW-2430
	OSW-1530		OSW-2730
	OSW-1830		

36" Tall	OSW-936	36" Tall	OSW-2136
	OSW-1236		OSW-2436
	OSW-1536		OSW-2736
	OSW-1836		

42" Tall	OSW-942	42" Tall	OSW-2142
	OSW-1242		OSW-2442
	OSW-1542		OSW-2742
	OSW-1842		



Wall Cabinets increase the amount of storage in your outdoor kitchen when structural wall space is available. Open Shelf Wall Cabinets provide the opportunity to put your items on display, or support baskets and bins for added functional storage of items you will use in the outdoor environment.

Standard Depth: 14" overall (14" box)

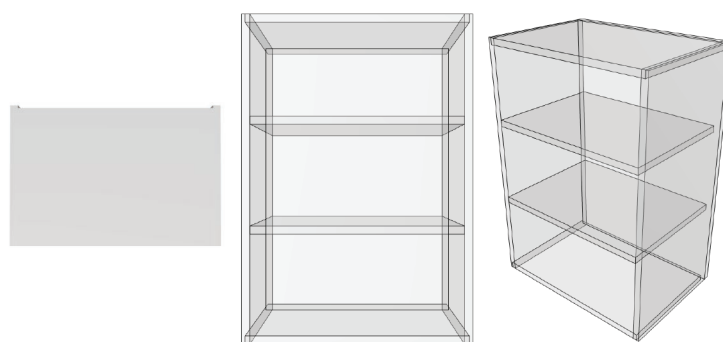
Available Modifications:

Any width available from 9 Inch to 27 Inch, and in any fraction of an inch.
Any height available from 9 Inch to 42 Inch, and in any fraction of an inch.

TOP View

FRONT View

3D View



Visit werever.com to view available colors and door styles for all cabinets.

All Werever Outdoor Cabinets are constructed from solid, 3/4" high-density polyethylene

Specification Sheet

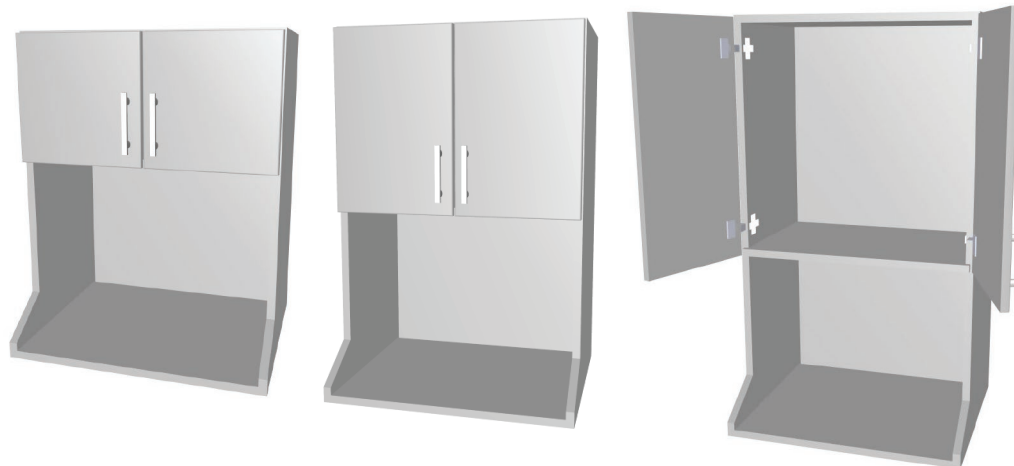
Microwave Wall Cabinet

Available Models:**Double Door**

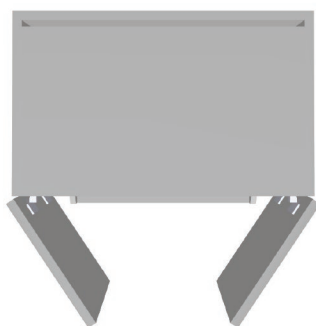
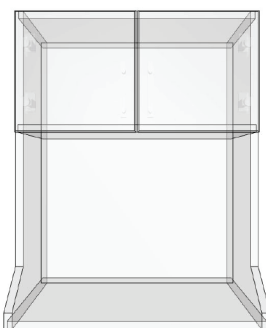
30" Tall MC-24-30
MC-27-30

36" Tall MC-24-36
MC-27-36

42" Tall MC-24-42
MC-27-42



Microwave Wall Cabinets both house your appliance and also provide additional storage in your project. This cabinet includes an appliance shelf for functional and flexible design and aesthetic. If your project layout has a Microwave, ask your Account Manager to utilize the Microwave Wall Cabinet in your design.

TOP View**FRONT View****3D View****Available Modifications:**

None available.

**NOTE: For countertop Microwaves only.
Appliance shelf depth is 17 3/4".**

Visit werever.com to view available colors and door styles for all cabinets.

All Werever Outdoor Cabinets are constructed from solid, 3/4" high-density polyethylene

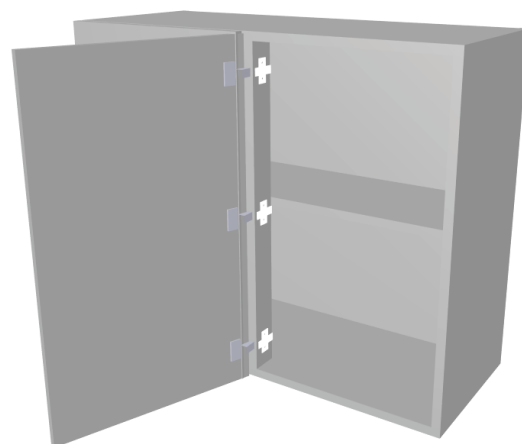
Specification Sheet

Blind Corner Wall Cabinet

Available Models:

BWC-36-24	1 Door	R/L
BWC-36-30	1 Door	R/L
BWC-36-36	1 Door	R/L
BWC-36-42	1 Door	R/L

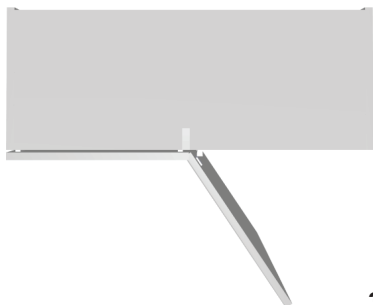
BWC-42-24	2 Door	R/L
BWC-42-30	2 Door	R/L
BWC-36-36	2 Door	R/L
BWC-36-42	2 Door	R/L



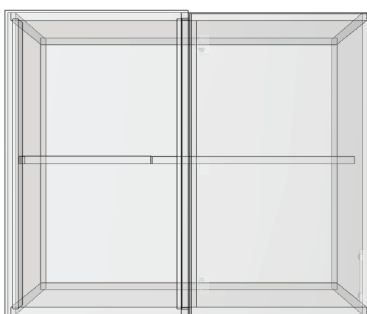
Any width available from 9 Inch to 30 Inch, and in any fraction of an inch.

Blind Corner Wall Cabinets provide extra storage in what may otherwise be dead space in the corner of your project. This cabinet includes an adjustable shelf for functional and flexible storage. If your project layout has a corner, ask your Account Manager to maximize overhead storage space with a Blind Corner Wall Cabinet.

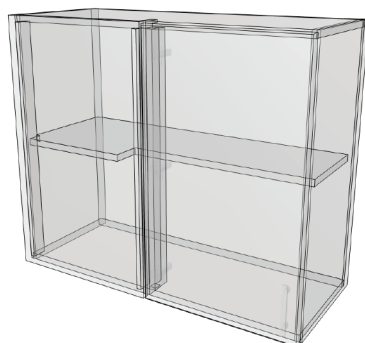
TOP View



FRONT View



3D View



Available Modifications:

Any height available from 18 Inch to 42 Inch, and in any fraction of an inch.

Visit werever.com to view available colors and door styles for all cabinets.

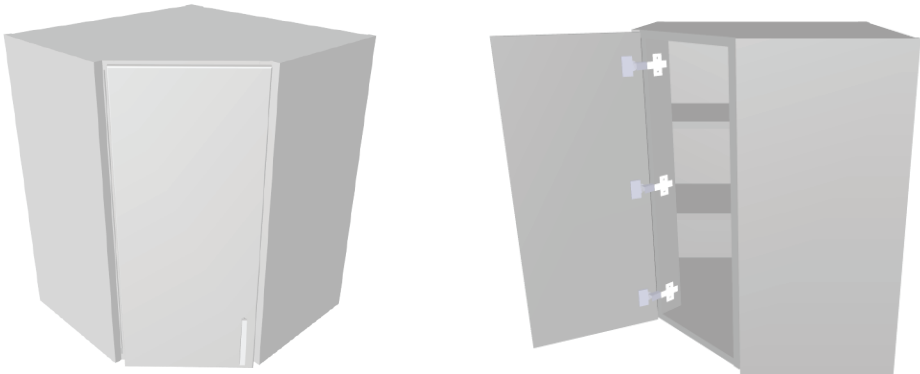
All Werever Outdoor Cabinets are constructed from solid, 3/4" high-density polyethylene

Specification Sheet

Wall Diagonal Corner Cabinet

Available Models:

WDC-18x24x24	1 Door	R/L
WDC-21x24x24	1 Door	R/L
WDC-24x24x24	1 Door	R/L
WDC-27x24x24	1 Door	R/L
WDC-30x24x24	1 Door	R/L
WDC-33x24x24	1 Door	R/L
WDC-36x24x24	1 Door	R/L
WDC-39x24x24	1 Door	R/L
WDC-42x24x24	1 Door	R/L

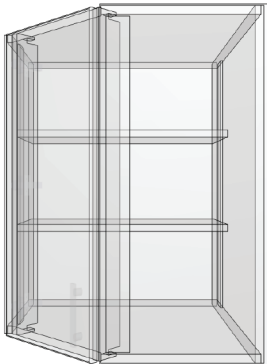


Wall Diagonal Corner Cabinets maximize accessibility and storage space in a corner. If space allows for this cabinet in your design plan, you will benefit from full access to your corner through the door set on a 45-degree angle. This cabinet includes one or two adjustable shelves depending on cabinet height.

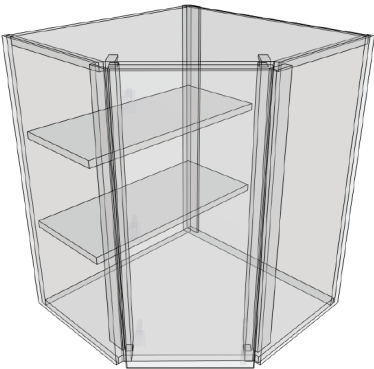
TOP View



FRONT View



3D View



Available Modifications:

None available.

Visit werever.com to view available colors and door styles for all cabinets.

All Werever Outdoor Cabinets are constructed from solid, 3/4" high-density polyethylene

Specification Sheet

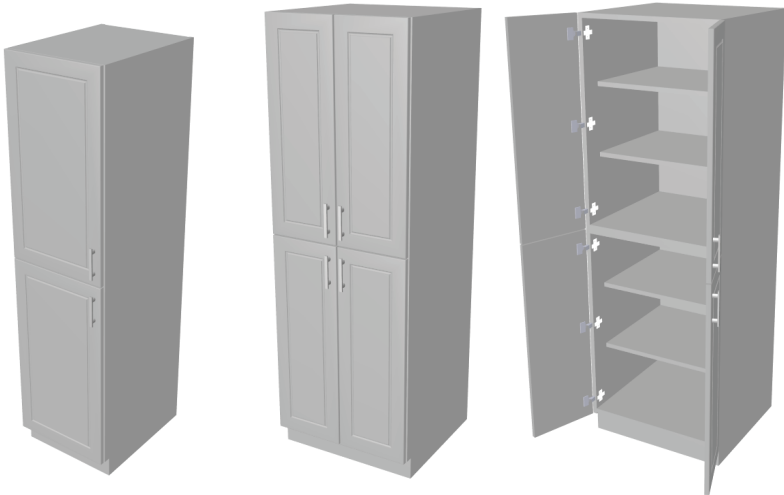
Pantry Cabinet

Available Models:

PC1860	2 Door	R/L
PC1872	2 Door	R/L
PC1884	2 Door	R/L
PC2460	4 Door	
PC2472	4 Door	
PC2484	4 Door	

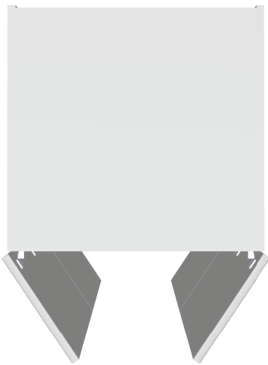
Any width available from 18 inch to 24 inch, and in any fraction of an inch.

Any height available from 60 inch to 84 inch, and in any fraction of an inch.



Pantry Cabinets multiply the amount of storage space in your outdoor kitchen and may become one of the most functional storage solutions in your space. Adjustable shelving comes standard; add pull-out trays for even more versatility. Please note, a center, fixed shelf is critical to the structural integrity of this cabinet model and cannot be removed. For taller items such as brooms and rakes, please consult with your Account Manager for possible solutions.

TOP View



FRONT View



Standard Depth: 24" overall (23" box)

Available Modifications:

Extend Side Panel (L/R)	+12"
Decrease Height	-12"
Decrease Width	-6"
Increase Depth	+6"
Decrease Depth	-6"
Add Shelf	+2
Add Pull-Out Tray	+8

Special Modifications:

Pantry Cabinet width may be reduced to 12" wide, and overall height may be reduced to 48" tall (44.25").

NOTE: Must be secured to rear wall. The center shelf is a fixed structural component and cannot be moved or removed.

Visit werenever.com to view available colors and door styles for all cabinets.

3D View



All Werever Outdoor Cabinets are constructed from solid, 3/4" high-density polyethylene

Specification Sheet

Pantry Cabinet with Drawers

Available Models:

PC1860-3	1 Door	R/L
PC1872-3	1 Door	R/L
PC1884-4	1 Door	R/L
PC2460-3	2 Door	
PC2472-3	2 Door	
PC2472-4	2 Door	
PC2484-4	2 Door	

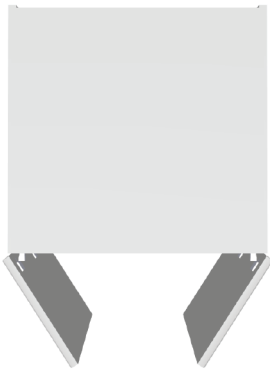
Any width available from 18 inch to 24 inch, and in any fraction of an inch.

Any height available from 60 inch to 84 inch, and in any fraction of an inch.



Pantry Cabinets multiply the amount of Storage space in your outdoor kitchen and may become one of the most functional storage solutions in your space. The Pantry Cabinet with Drawers offers the benefit of both pantry door storage and drawer base functionality. Adjustable shelving comes standard behind the top door(s).

TOP View



FRONT View



3D View



Standard Depth: 24" overall (23" box)

Available Modifications:

Extend Side Panel (L/R)	+12"
Decrease Height	-12"
Decrease Width	-6"
Increase Depth	+6"
Decrease Depth	-6"
Add Shelf	+1
Add Pull-Out Tray	+4

Special Modifications:

Pantry Cabinet width may be reduced to 12" wide, and overall height may be reduced to 48" tall (44.25").

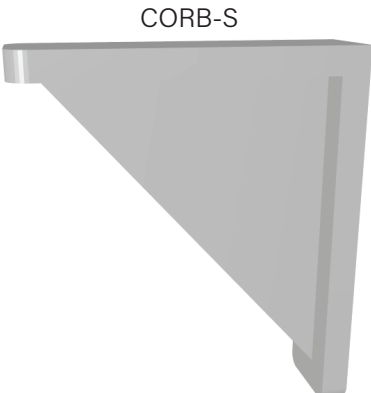
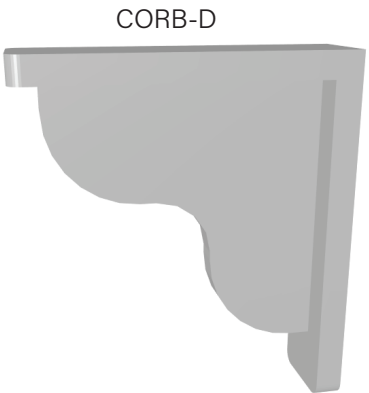
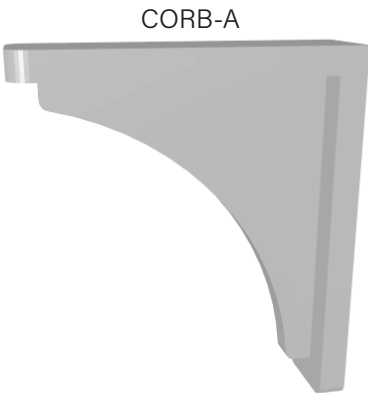
NOTE: Must be secured to rear wall. The center shelf is a fixed structural component and cannot be moved or removed.

Visit werenever.com to view available colors and door styles for all cabinets.

All Werenver Outdoor Cabinets are constructed from solid, 3/4" high-density polyethylene

Specification Sheet

Corbels



Available Models:

- | | |
|--------|-----------------|
| CORB-A | Arched Corbel |
| CORB-D | Deluxe Corbel |
| CORB-S | Standard Corbel |

Corbels add both aesthetics and function. Corbels may be used on the back side of an island or free-standing layout of cabinetry to help support your countertop or bar top overhang for seating. They can even be used on the end of a run for added countertop surface beyond the cabinets if space allows. Corbels are constructed from the same color of HDPE as your cabinetry order.



Standard Size: 9" Deep, overall
10" High, overall
2.5" Wide, overall

Available Modifications:

None available.

NOTE: Please consult with your Countertop Fabricator and installer for the optimal method of installation of corbels to properly support your countertop or bar top overhang. Additional reinforcement may be required in the field and will not be determined or provided by Werever.

Example Rendering of Deluxe Corbel

Features Full V-Groove Decorative upgrade detail on Finished Back Panels.

Visit werever.com to view available colors and door styles for all cabinets.

All Werever Outdoor Cabinets are constructed from solid, 3/4" high-density polyethylene

Specification Sheet

False Cabinet

Available Models:

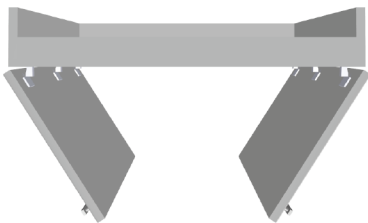
False-B-9	1 Door	R/L
False-B-12	1 Door	R/L
False-B-15	1 Door	R/L
False-B-18	1 Door	R/L
False-B-21	2 Door	
False-B-24	2 Door	
False-B-27	2 Door	
False-B-30	2 Door	
False-B-33	2 Door	
False-B-36	2 Door	



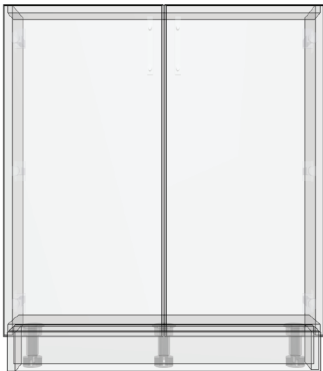
Any width available from 9 inch to 36 inch, and in any fraction of an inch.

Use a False Cabinet in your project to conceal the area where you have something impeding a full cabinet box while maintaining the aesthetics of your base cabinets. A False Cabinet can be used for uninterrupted design and functionality. Consult with your Account Manager to find out if a False Cabinet may be the solution in your project.

TOP View



FRONT View



3D View



Standard Height: 34.75" overall (31" box)
Standard Depth: 6" overall (5" box)

Available Modifications:

Extend Side Panel (L/R)	+12"
Increase Height	+6"
Decrease Height	-16"
Decrease Width	-3"

Special Modifications:

Available as small as 7" wide.

Visit werever.com to view available colors and door styles for all cabinets.

All Werever Outdoor Cabinets are constructed from solid, 3/4" high-density polyethylene

Specification Sheet

Fillers

Available Models:



Base Filler (BF-)

The Base Filler is used between a cabinet and a wall, or two cabinets when the faces are not aligned. This filler will ensure your cabinet door will clear and open beyond 90 degrees. Stainless steel binding posts are utilized to connect the filler to the cabinet. Base Fillers can be trimmed and scribed once cabinets are level, square and plumb.

Available 1" wide up to 12" wide (L/R).



Double Return Filler (BFDR-)

The Base Filler with Double Return is used between two cabinets where the faces are aligned; two returns allow you to connect the filler to a cabinet on each side. Double Return Fillers may not be trimmed during installation and should be ordered to fit. Use this filler if you are spanning an area with a post or other obstruction.

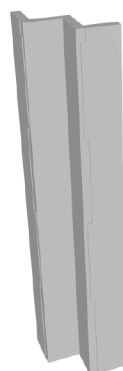
Available 1" wide up to 12" wide (L/R).



Wall Filler (WF-)

Wall Fillers have the same return piece as all base fillers to connect to the side of the cabinet box, and also have a bottom piece to conceal the void between the wall and the Wall Cabinet. Use a Wall Filler between the cabinet and wall to allow your cabinet door to open the full 100 degree swing of the hinges.

Available 1" wide up to 6" wide (L/R).



Base Corner Filler (BCF-)

Rather than having to trim and miter fillers at a dead corner, Werever offers a Base Corner filler precisely sized to fill the corner of your project. A minimum of 2"-3" is recommended at a dead corner with standard cabinets. A minimum 5-6" is recommended if a Grill or Side Burner are positioned next to the corner.

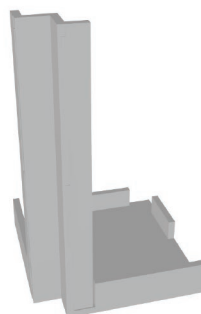
Available 3"x3", up to 12"x12"



Refrigerator Filler (RF-)

Refrigerator Fillers are used between a Cabinet and an Appliance. They are used particularly if clearance is required for a door or drawer to open. This filler may not always be required, and your Account Manager and Designer will assist you with the correct application and use.

Available 1" wide up to 12" wide (L/R).



Wall Corner Filler (WCF-)

Wall Corner Fillers provide extreme ease for installation. Two wall fillers join to form one and are cut specifically to your project so there is no need to fit and trim in the field. A precisely fabricated bottom panel conceals the void between the wall and the Wall Cabinet. The 3"x3" size allows for doors to open clear of the adjoining run.

Available 3"x3"

All fillers are sized to the height of your base, wall, or pantry cabinets. Fillers can be used in a variety of ways to give you the perfect, custom fit. Consult with your Account Manager on the best use and style of filler.

Visit werever.com to view available colors and door styles for all cabinets.

All Werever Outdoor Cabinets are constructed from solid, 3/4" high-density polyethylene

Specification Sheet

Refrigerator End Panel

Available Models:

REP-3	R/L
REP-3.5	R/L
REP-4	R/L
REP-4.5	R/L
REP-5	R/L
REP-5.5	R/L
REP-6	R/L

Any width available from 3 inch to 6 inch, and in any fraction of an inch.



Refrigerator End Panels are designed to cap the end of a run of base cabinets when under-counter appliance, such as refrigerator, ice maker, or dishwasher, is planned to be installed on an end. Refrigerator End Panels are structural, will assist in supporting the weight of your countertop, and have leveling legs.

Standard Height: 34.75" overall (31" box)

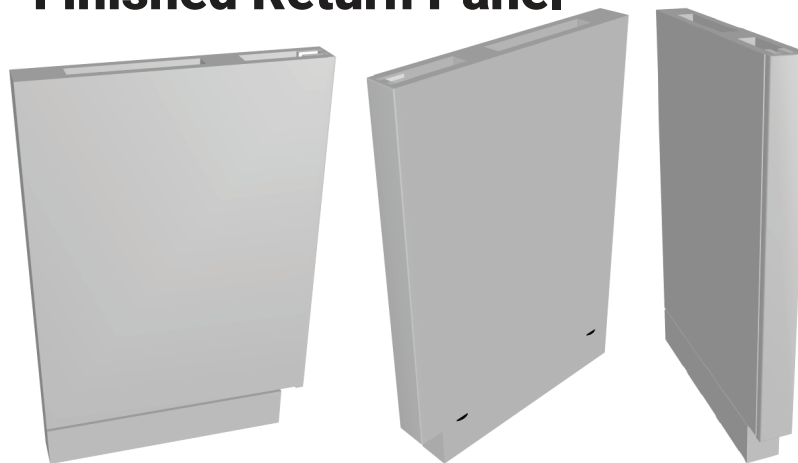
Standard Depth: 24" overall (23" box)

Finished Return Panel

Available Models:

FRP-3	R/L
-------	-----

Width may be increased upon request, if required.



Finished Return Panels are designed with two solid, finished panel sides to cap the end of an open space where both sides of the panel will be visible. Finished Return Panels are structural, will assist in supporting the weight of your countertop, and have leveling legs.

Standard Height: 34.75" overall (31" box)

Standard Depth: 24" overall (23" box)

Visit werever.com to view available colors and door styles for all cabinets.

All Werever Outdoor Cabinets are constructed from solid, 3/4" high-density polyethylene

Specification Sheet

Corner Posts

Available Models:

Standard Corner Posts:

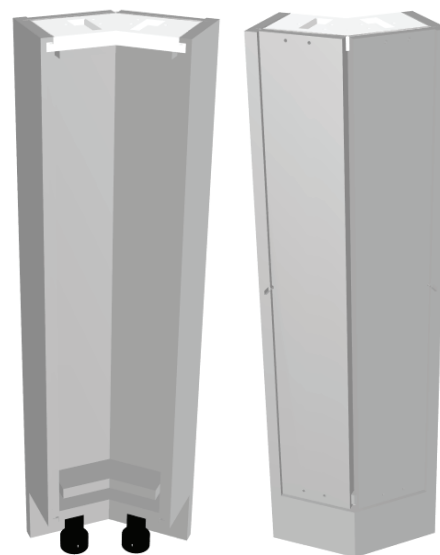
CP-90	4" x 4"
CP-45	6" x 6"

There are times when additional structural support is needed, for example when attaching finished back panels to cabinet installations or in voided areas. Werever builds Corner Posts that use the same leveling legs as their cabinets to simplify installation and allow toe kick pieces to be attached. Your design may call for these pieces which greatly reduce installation difficulty and improve the structural integrity of the finished project.

CP-90

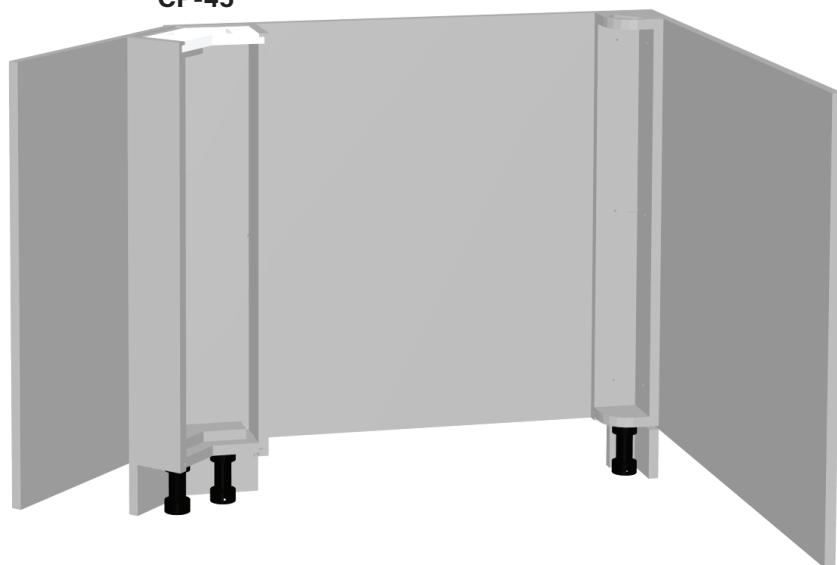


CP-45



CP-45

CP-90



Available Modifications:

Height can be modified to coordinate with your Cabinet height.

NOTE: Your Account Manager and Designer will assist you with the recommended placement of Corner Posts in your design plan. Please also consult with your Installer and Countertop Fabricator regarding the required support needed for your project installation.

Example Rendering of Corner Posts

Rendering also features Werever's Decorative Back Panels (DBP-) used in an island or other free-standing designs.

Visit werever.com to view available colors and door styles for all cabinets.

All Werever Outdoor Cabinets are constructed from solid, 3/4" high-density polyethylene

Specification Sheet

Bi-Level Corner Posts

Available Models:

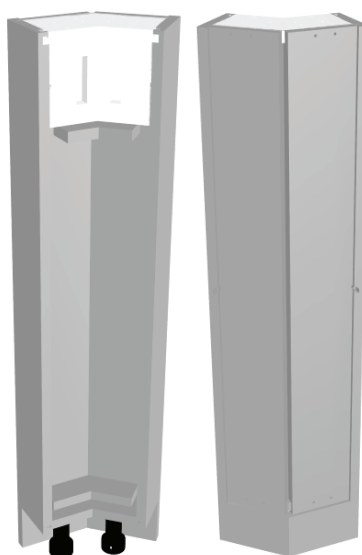
Bi-Level Corner Posts:

BLCP-90 12" x 12"

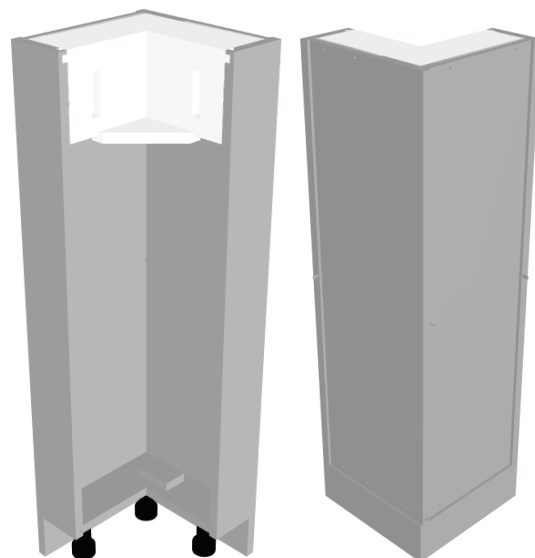
BLCP-45 6" x 6"

There are times when additional structural support is needed, for example when attaching finished back panels to cabinet installations or in voided areas. Werever builds Bi-Level Corner Posts that use the same leveling legs as their cabinets to simplify installation and allow toe kick pieces to be attached. Your design may call for these pieces which greatly reduce installation difficulty and improve the structural integrity of the finished project.

BLCP-90

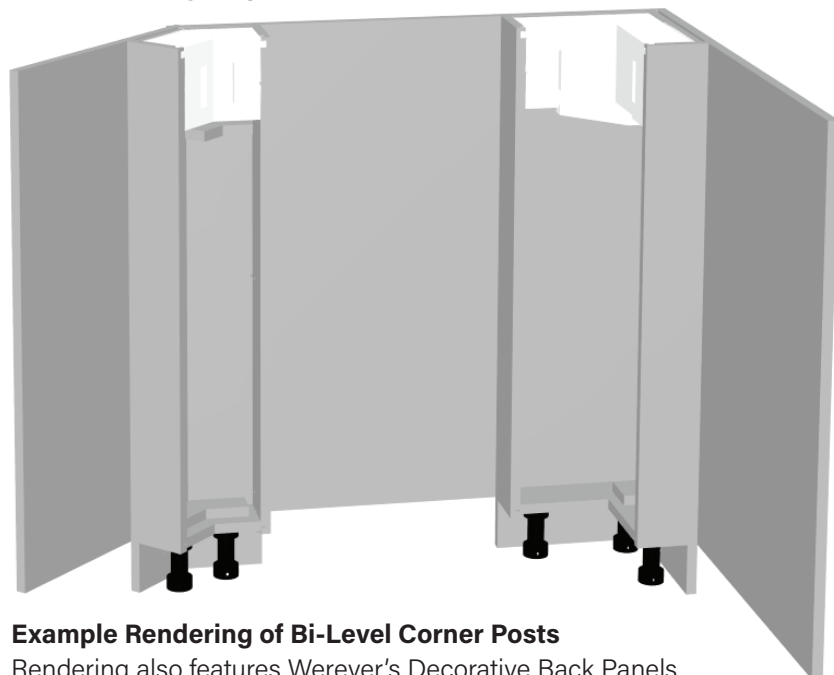


BLCP-45



BLCP-45

BLCP-90



Example Rendering of Bi-Level Corner Posts

Rendering also features Werever's Decorative Back Panels (DBP-BILEV) used in an island or other free-standing designs.

Available Modifications:

Height can be modified to coordinate with your Cabinet height.

NOTE: Your Account Manager and Designer will assist you with the recommended placement of Bi-Level Corner Posts in your design plan. Please also consult with your Installer and Countertop Fabricator regarding the required support needed for your project installation.

Visit werever.com to view available colors and door styles for all cabinets.

All Werever Outdoor Cabinets are constructed from solid, 3/4" high-density polyethylene

Specification Sheet

Bi-Level Assemblies

Available Models:

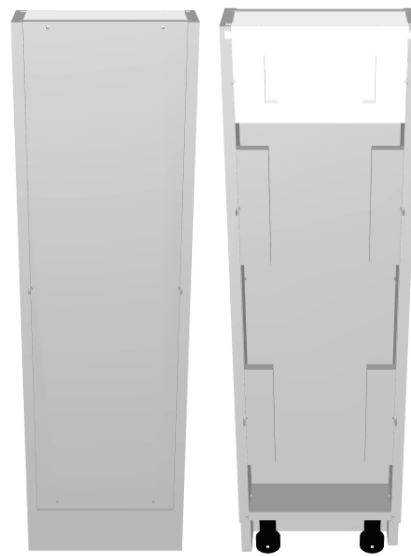
BL-TOP
BL-TOP-MB

There are times when additional structural support is needed, for example when attaching finished back panels to cabinet installations or in voided areas. Werever builds Bi-Level Top Assemblies that use the same leveling legs as their cabinets to simplify installation and allow toe kick pieces to be attached. Your design may call for these pieces which greatly reduce installation difficulty and improve the structural integrity of the finished project.

BL-TOP



BL-TOP-MB



BL-TOP



Example Rendering of Bi-Level Top Assembly.

Top Assemblies can be used behind an appliance to complete a bi-level run (BL-TOP), or behind a cabinet that doesn't have the bi-level option (BL-TOP-MB).

Available Modifications:

Height can be modified to coordinate with your Cabinet height.

NOTE: Your Account Manager and Designer will assist you with the recommended use of Top Assemblies in your design plan. Please also consult with your Installer and Countertop Fabricator regarding the required support needed for your project installation.

Visit [werever.com](https://www.werever.com) to view available colors and door styles for all cabinets.

All Werever Outdoor Cabinets are constructed from solid, 3/4" high-density polyethylene

Specification Sheet

Decorative Back Panels

Available Models:

DBP-STD	31" Tall
DBP-BILEV	37" Tall
DBP-BH	42" Tall
DBP-TALL	48" Tall

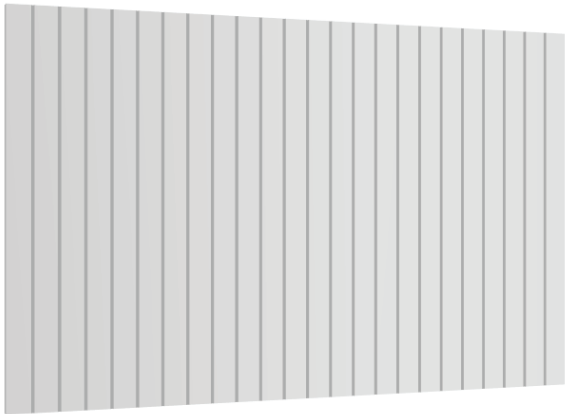
Decorative Back Panels are available up to 72" wide solid color, or up to 53" wide in woodgrain upgrade.

Any height available up to 48" tall, in any fraction of an inch.

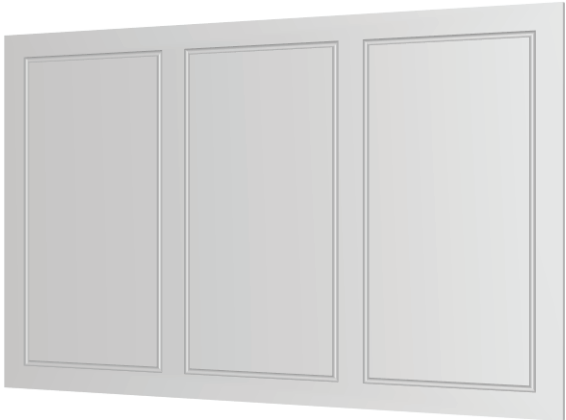


Decorative Back Panels finish the back side of any island or other free-standing cabinetry installation with the same 3/4" thick HDPE material that the cabinets are constructed from. Installation Hardware for Decorative Back Panels is provided with your order. Decorative Upgrades are available in Full V-Groove (beadboard-look) or to coordinte with your Upgraded Door Style selection.

Full V-Groove Detail



Cove Detail



Example Renderings of back panels with Decorative Detail.
Decorative Back Panels can feature Werever door detail, or a full version of the door detail depending on the style of your cabinets.

Visit werever.com to view available colors and door styles for all cabinets.

All Werever Outdoor Cabinets are constructed from solid, 3/4" high-density polyethylene

Specification Sheet

Toe Kick

Available Models:

TK-6 5" Tall

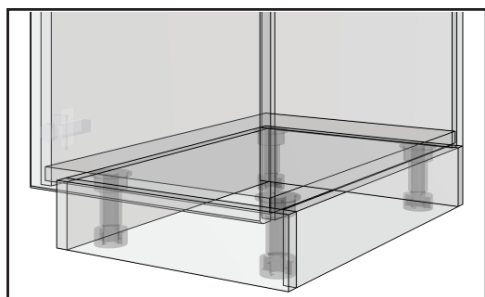
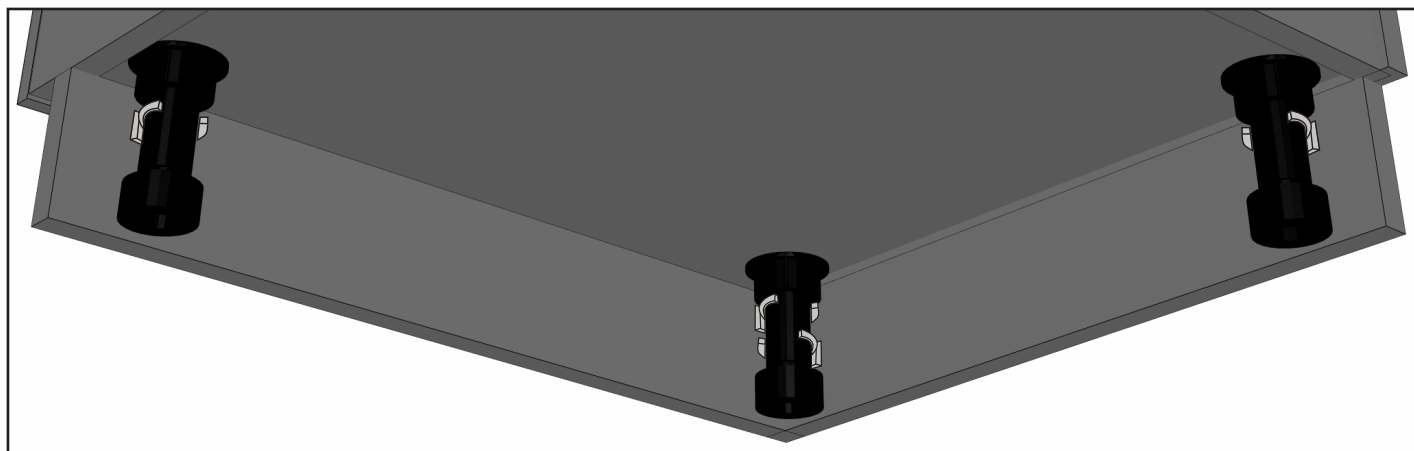


Toe Kick may be modified up to 10" Tall, as required.

Fixed 72" width.

All Werever Cabinets install on adjustable legs, allowing for a level, square and plumb installation regardless of uneven floor surface or slope in your outdoor environment. Toe Kick material, of the same 3/4" thick solid HDPE material as the cabinetry, clips on these adjustable legs with clips provided with your order. Toe Kick is trimmed and ripped during installation for a perfect, finished fit at the floor line.

Toe Kick clipped to the adjustable legs.



Toe Kick installed around adjustable legs.

Visit [werever.com](https://www.werever.com) to view available colors and door styles for all cabinets.

All Werever Outdoor Cabinets are constructed from solid, 3/4" high-density polyethylene

Specification Sheet

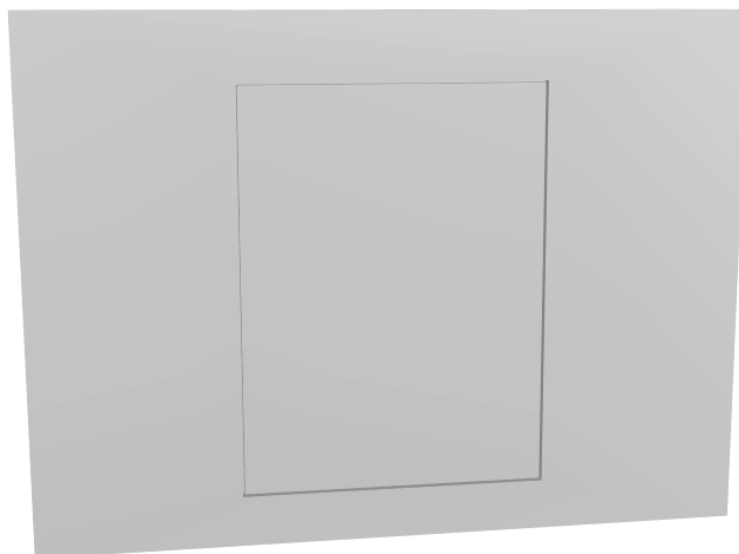
Access Doors

Available Models:

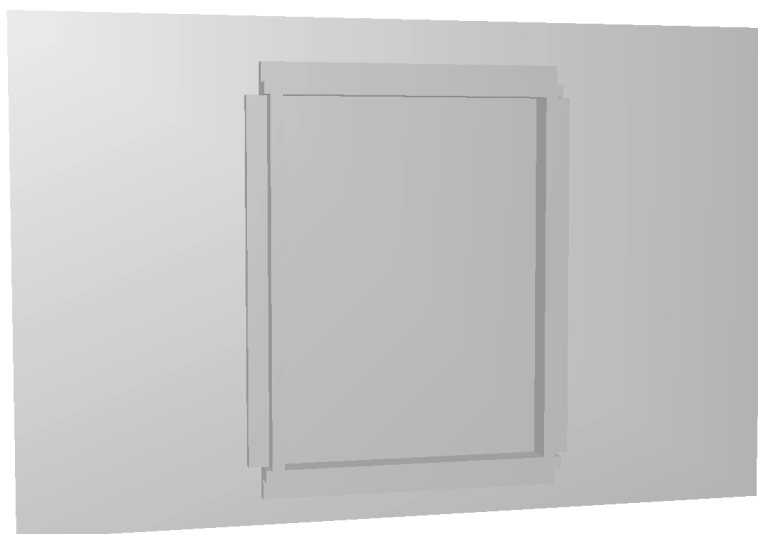
AAD
AAD DOUBLE

There are times when you may want to utilize a dead corner for storage, or you may have things like plumbing that you need to reach after your cabinet project is installed. This is the purpose of the Access Door. These doors come in a single, or double door configuration depending on the width of the opening. The Access Door is hinged, and will blend in seamlessly with the style of your back panel.

AAD Front



AAD Back



Available Modifications:

Height and Width can be modified, available up to 18" single door, and 36" double door.

NOTE: Your Account Manager and Designer will assist you with the recommended placement and size of Access Doors in your design plan.

Example Rendering of back panel with Access Door.

Rendering also features Werever's Decorative Back Panel (DBP-) used in an island or other free-standing designs.

Visit [werever.com](https://www.werever.com) to view available colors and door styles for all cabinets.

All Werever Outdoor Cabinets are constructed from solid, 3/4" high-density polyethylene

Cabinet Specification Cheat Sheet

Base Cabinets

Single Door Panel	Up to 18" wide
Full Height Door Base	Up to 36" wide
False Cabinets	Up to 36" wide
Base with Top Drawer	Up to 30" wide
3-Drawer Base	Up to 21" wide
4-Drawer Base	Up to 27" wide
5-Drawer Base	Up to 30" wide
Single Trash w/ or w/o Drawer	15-18" wide
Double Trash w/ or w/o Drawer	21-24" wide
Sink Base w/ False Face	Up to 60" wide
Sink Base w/ Full Height Door	Up to 60" wide
Grill Cabinet	Up to 64" wide
Side Burner Cabinet	Up to 24" wide
	For larger units, use grill cabinet

Wall Cabinets

Single Door Panel	Up to 18" wide
Wall Cabinets	Up to 27" wide
Wall Cabinets	Up to 42" tall

Tall/Pantry Cabinets

Pantry Cabinets	Up to 24" wide
Pantry Cabinets	Up to 84" tall

Additional Items/Notes

Back Panels - Solid Color	Up to 72" wide
Back Panels - Woodgrain	Up to 53" wide
Finished Back Panels	Add +3/4" to Depth
Add Shelves	Up to 36" wide (nosing added over 30" wide)
Add Pull-Out Trays	Up to 30" wide
Toe Kick	6ft length 5" standard height Mod height available, up to 10" 31" tall
Standard Box Height (Base Cabinets)	Adjustable Legs, shortest 3.75" tall Standard Total Height, shortest 34.75" tall Adjustable Legs extend up to approx. 6"